

University of Luxembourg  
Global impact – local relevance

A partner of Canada

MAISON DU SAVOIR

## Why Canada?

- **Common strengths** of Luxembourg and Canada
  - Very multilingual and international mindset
  - Very competitive economy and highly qualified workforce
  - Dynamic research ground
  - Strongly innovative environment
- Overlapping **focus areas of research** such as
  - Health, life sciences and biomedicine
  - Computer science, data science, Artificial Intelligence (AI)
  - Educational sciences and educational testing
  - Digital learning and digital humanities; law
- **Quebec:** Strong interest in cooperation, focus on AI, medicine, space



## Our partner institutions

- Université de Montréal
- Université de Sherbrooke
- Université Laval
- University of Ottawa
- Université du Québec à Chicoutimi
- Université de Moncton
- Bureau de coopération interuniversitaire
- University of Western Ontario (planned)



## Cooperation activities

- Ongoing student and staff exchange
- Joint Mission of **Research Luxembourg to Québec** in February 2019
- 7 accepted and ongoing joint research projects, mostly in
  - **Computer science and ICT security**
  - Educational sciences
  - Political sciences
  - Socio-economic research



**My view of Luxembourg as a Canadian ...**

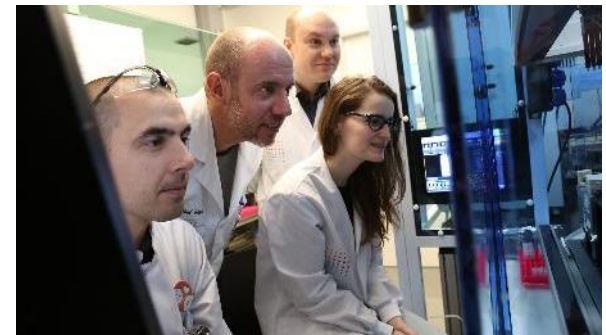
# The University of Luxembourg: our unique profile.

## Belval - a unique innovation hub

- **About one billion Euros** of public investment through 2018
- A mix of studies, research, work, leisure
- Main campus of the University
- Regrouping University, research centres, incubators



- Esch-sur-Alzette: European Capital of Culture 2022



## A young and dynamic research university

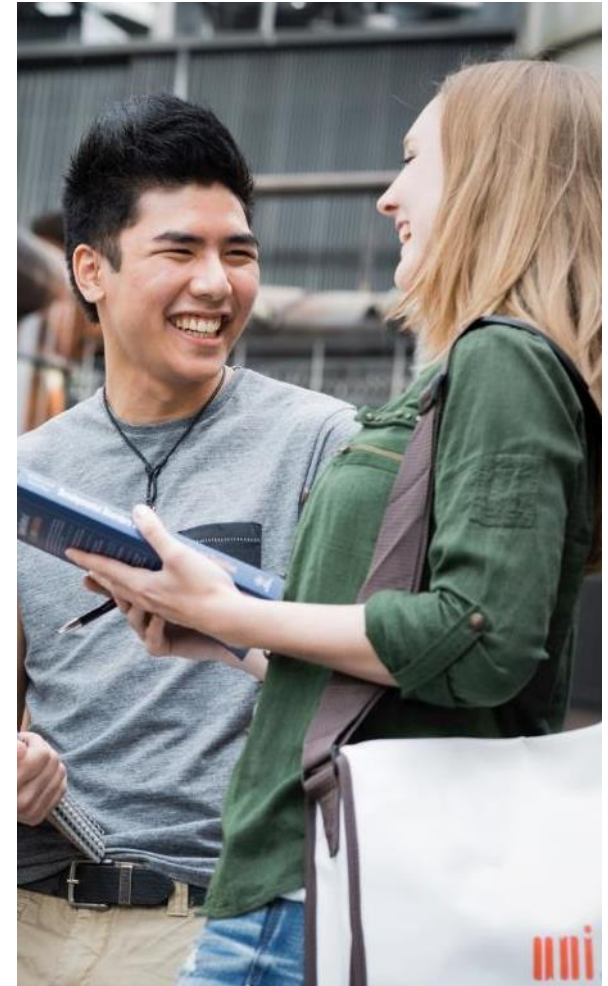
- Founded in 2003
- **6,400 students** (1,650 Master and 800 PhD students)
- 12 Bachelor degrees and 43 Master degrees
- Four doctoral schools
- **270 faculty members**
- 440 post-doctoral researchers
- Direct government allowance 2019: **200 million Euros**





## An international and multilingual university

- **54% international students from 125 countries**
- Staff from 90 countries
- **Multilingual** study programmes, using French, English, German
- Mandatory **semester abroad**
- Multiple international agreements on student and researcher exchange



## A partner for society and industry

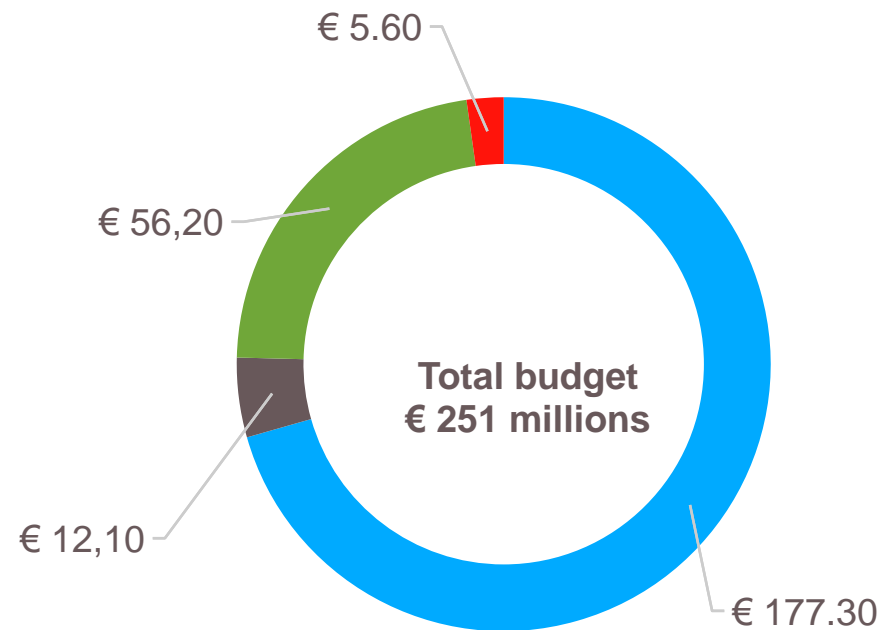
- Cooperation with **European institutions** such as the European Court of Justice and the European Investment Bank
- Cooperation with **innovative companies**
- Cooperation with the **Financial Centre**
- Cooperation and partnerships with research institutes in Luxembourg
- Cooperation with numerous non-academic partners such as ministries, local governments, associations...



## A financially sound institution

### University budget in 2018 \*

- State endowment
- Self funding
- Third party funding
- State personnel seconded to the UL



\* Realised amounts in million of Euros as of 31.12.2018

## A focus on interdisciplinary research

Computer  
Science & ICT  
security



Materials  
science



European and  
international  
law



Finance and  
financial  
innovation



Education



Digital and  
contemporary  
history



**Cross-disciplinary theme: Health and Systems Biomedicine**

**Cross-disciplinary theme: Data modeling and simulation**

## Training the experts for tomorrow

- More than **17,000 degrees** awarded since 2005/2006:
  - 5,700 Bachelor
  - 3,900 Master
  - 860 PhD
  - 6,800 others
- Entrepreneurial programmes



## Contributing to Luxembourg's future

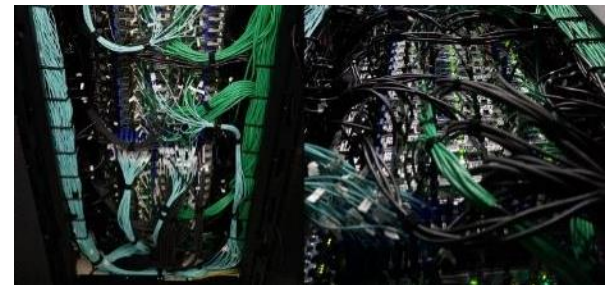




Digital  
Lëtzebuerg

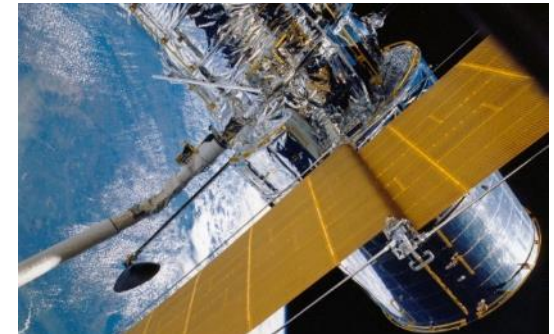
## Accelerating world-class HPC technologies in Luxembourg

- **UL High Performance Computing Centre (HPC)**, hosting State-of-the-art high performance computing clusters
- More than **9 million Euros** invested since 2006
- One of the **major actors in HPC and Big Data** for the Greater Region Saar-Lor-Lux
- Member of the **European Network PRACE** (Partnership for Advanced Computing in Europe)



## Accelerating space research and education

- **SES Chair** in Satellite Communication and Media Law since 2010
- **Master in Space, Communication and Media Law**
- **Interdisciplinary Space Master as of Sept. 2019**
- Interdisciplinary centre SnT: over **40 long-term and collaborative research** projects in
  - Autonomous craft
  - Space robotics
  - Space communication systems
  - Software development
  - Assurance for space technologies





## Accelerating research on Parkinson's disease

- National Centre of Excellence in Research on **Parkinson's disease** (NCER-PD)
- Partners:
  - Luxembourg Centre for Systems Biomedicine
  - Integrated Biobank of Luxembourg
  - Luxembourg Institute of Health
  - Centre Hospitalier de Luxembourg
- Funded by the FNR since 2015
- Long-term research projects including a **PD cohort**



## A selection of partners



University of Luxembourg

Merci | Thank you | Danke

