



Making Innovation Happen

One Stop Shop for Innovative Business Development

Jean-Paul Hengen | 12 February 2015

Luxembourg: an attractive location for R&D and innovation

- 7 A strategic European location
- 7 Luxembourg: centre of the “GREATER REGION”
- 7 The soundest financials in Europe
- 7 A highly skilled, multinational workforce
- 7 Stable and favourable business environment
- 7 Dynamic research community
- 7 A full range of support measures
- 7 An interesting IP destination
- 7 A perfect place to live



Major RDI players in Luxembourg

Luxembourg Private R&D Actors (some examples)



Public research in Luxembourg



RDI landscape in Luxembourg

7 R&D personnel (as FTE): approx.
5,700 (2012)

- of which 64% in the private sector

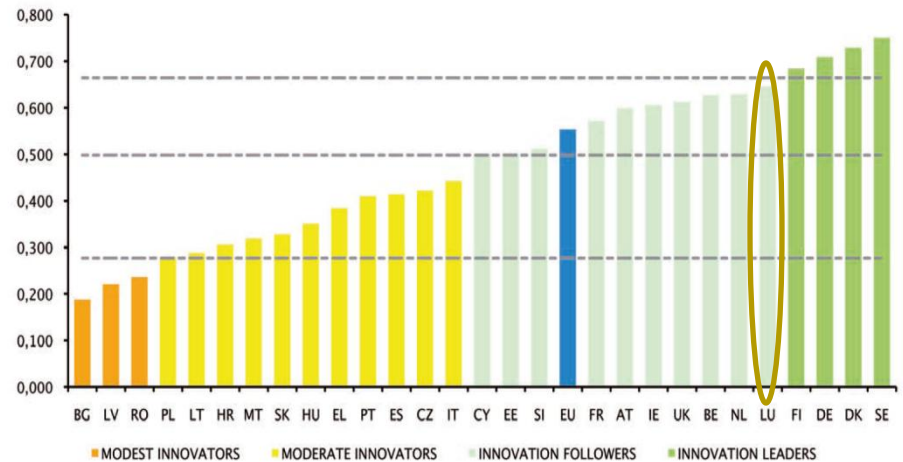
7 R&D and innovation expenses:
1,46% of GDP (2012)

- Objective 2020: 2.3 - 2.6% of GDP

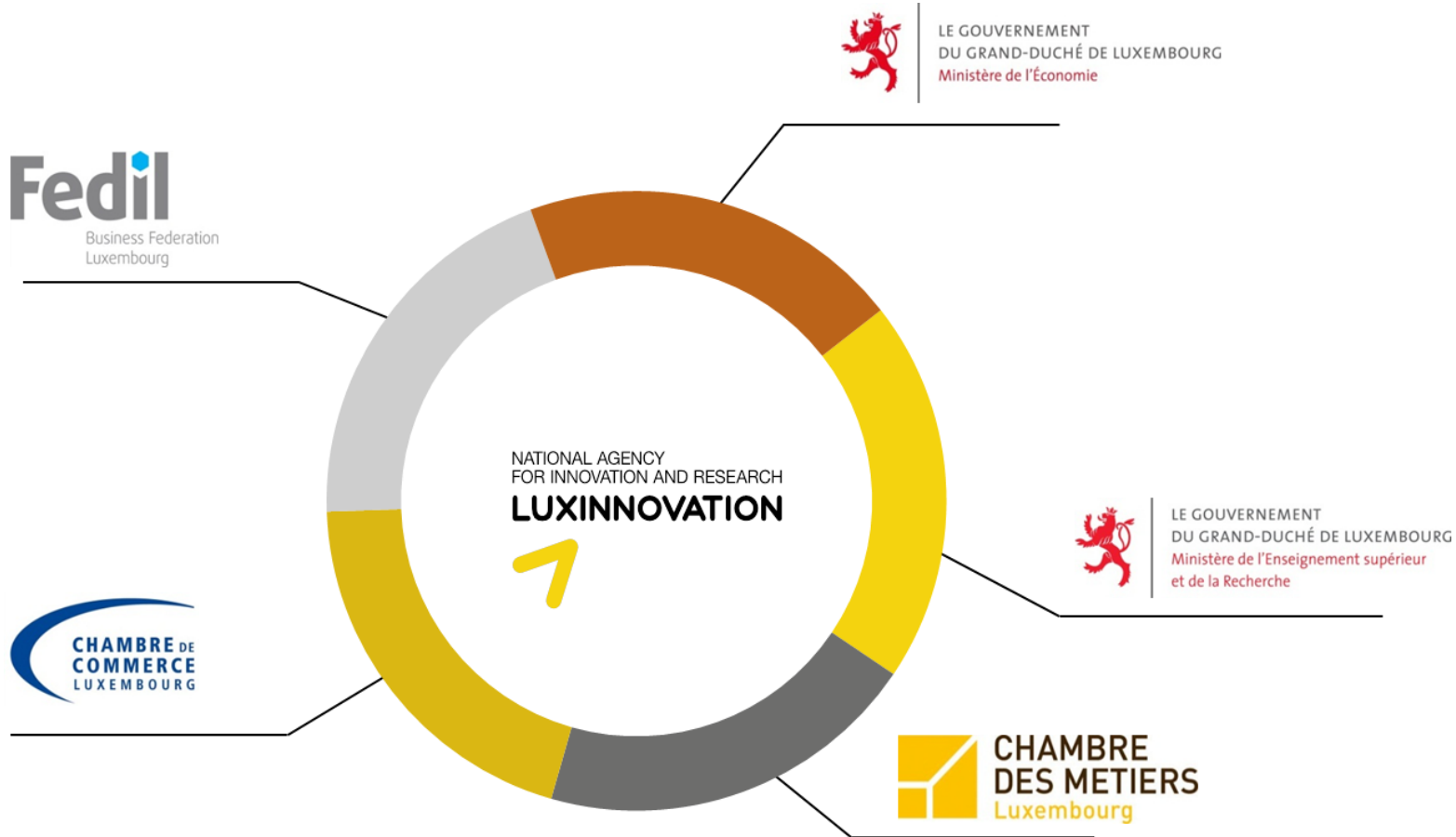
7 Public credit budget for R&D:
€292.3 million (2013)

- Multiplication by 10 since 2000

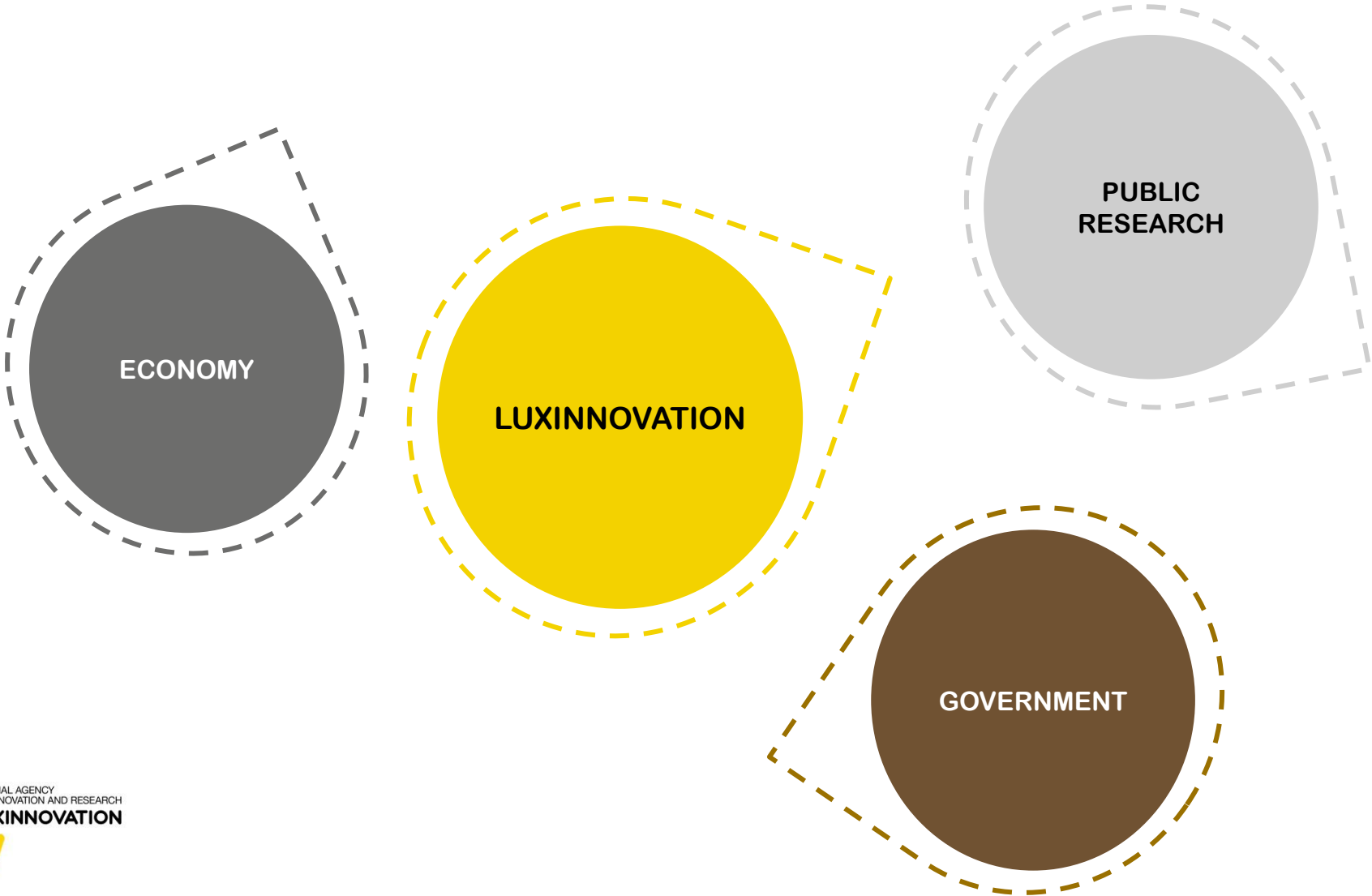
Figure 1: EU Member States' innovation performance



Luxinnovation : a public-private partnership



At the heart of Luxembourg's innovation system



Who we are?



45 STAFF MEMBERS

19 WOMEN
26 MEN



12

NATIONALITIES
REPRESENTED IN THE TEAM

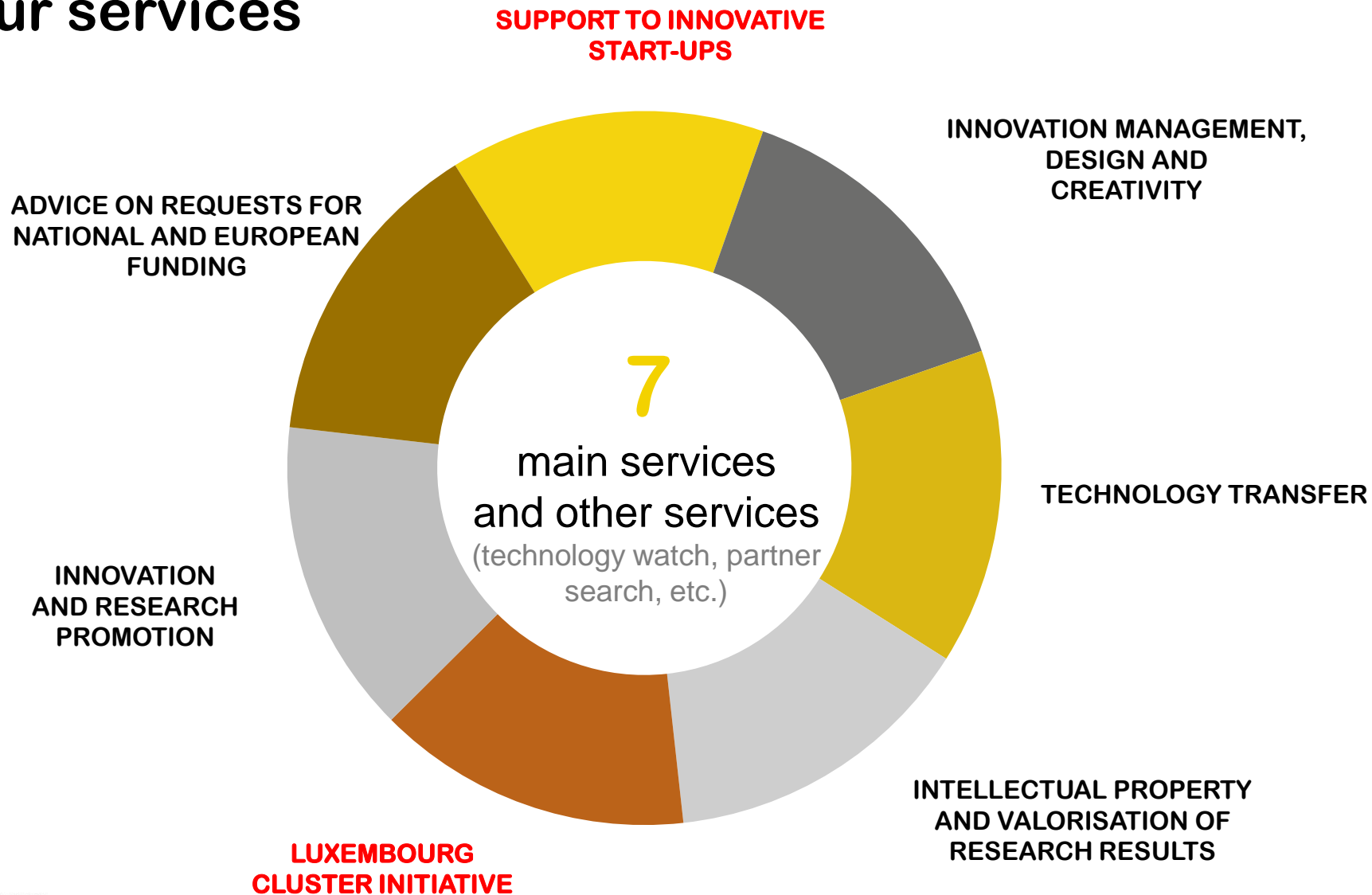
Stimulating the competitiveness of the country's economy through research, innovation, creativity and design.

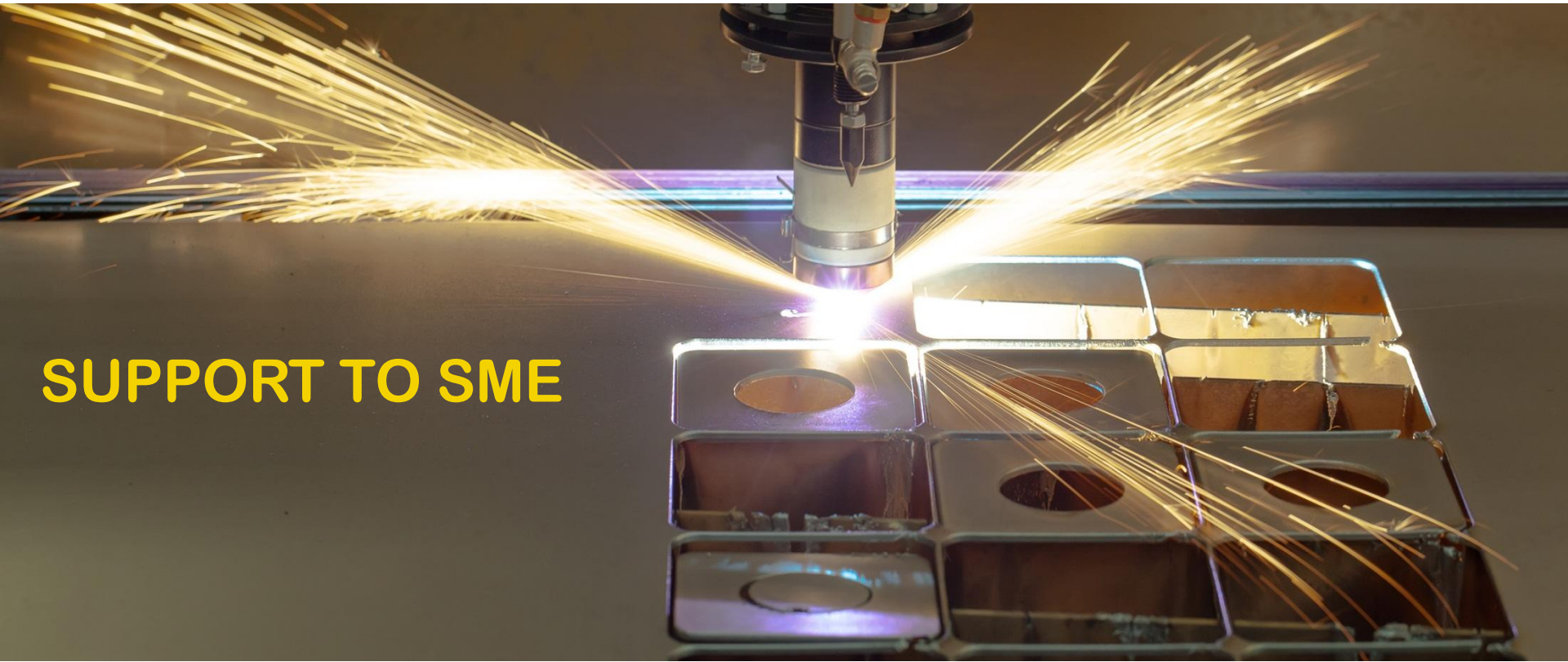
- 1** Businesses of any size
- 1** Innovative start-ups
- 1** Public research organisations

What we do?

- Contribute to **enhancing** RDI skills of start-ups, SMEs and large enterprises
- Participate in the **intensification** of RDI activities carried out by researchers within the public research organisations
- Help **developing** a sustainable culture of research and innovation in Luxembourg

Our services





SUPPORT TO SME

Goal of the program Fit for Innovation

Objective:

Improving SME's overall business efficiency in their existing core activities

- to gain competitiveness on a short-term and
- to free resources for innovation and growth activities on a mid- to long term basis.

Focus:

The program focuses on **three areas** to increasing the overall competitiveness of the SME's:

1. **Costs:** Realise cost savings by eliminating wastes in current business processes,
2. **Productivity:** Increase business activity by exploiting unused productive resources and by streamlining current business processes,
3. **Quality:** Increase customer satisfaction and sales by improving the perceived level of quality of existing products and services.

FUNDING



NATIONAL AGENCY
FOR INNOVATION AND RESEARCH

LUXINNOVATION



Active at EU and national levels

EUROPEAN

European Programme Committees / Boards of ESA, Horizon 2020, EUREKA, ...

- Represent Luxembourg in the committees in charge of implementing the programmes (role shared with the Ministry of Higher Education & Research and the FNR)
- Defend the interests of local R&D stakeholders
- Propose R&D subjects on which LU actors want to position themselves
- Facilitate contacts with EC/ESA representatives

NATIONAL

National contact point for ESA, Horizon 2020, CIP, Eureka, ...

- Informing, awareness raising
- Advising, assisting and training
- Signposting, feedback

National funding programmes for Research and Innovation

- Information and advise
- Personalised assistance of applicants during the submission process

**SUPPORT TO
START-UP's**

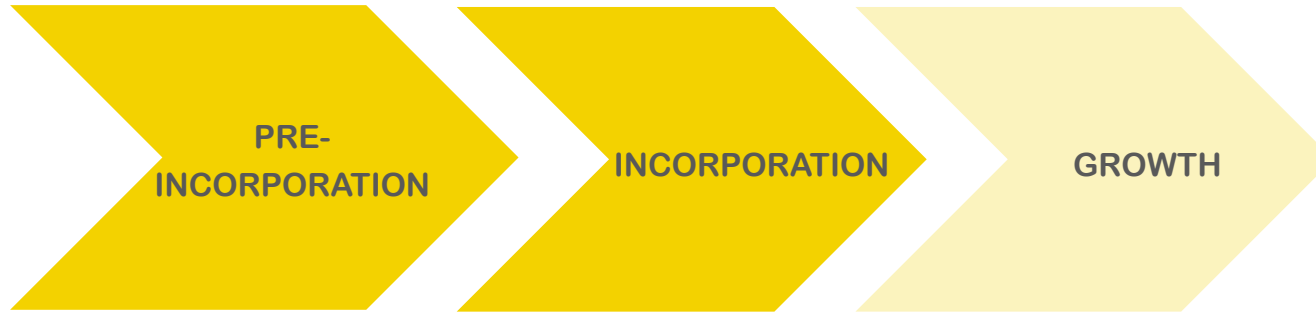


NATIONAL AGENCY
FOR INNOVATION AND RESEARCH

LUXINNOVATION



Start-up support



- 7 Advice on business **establishment in Luxembourg**
- 7 Business **idea** evaluation
- 7 Business **model** definition
- 7 Business **plan** elaboration
- 7 Public **financial aid** applications
- 7 Advice on **private investor contacts**

Luxembourg as start-up location

- 7 Central European location
- 7 Stable business environment
- 7 State-of-art ICT infrastructure
- 7 Favourable taxation
- 7 Attractive public aid measures
- 7 Multicultural, multilingual population with multinational education backgrounds
- 7 ...



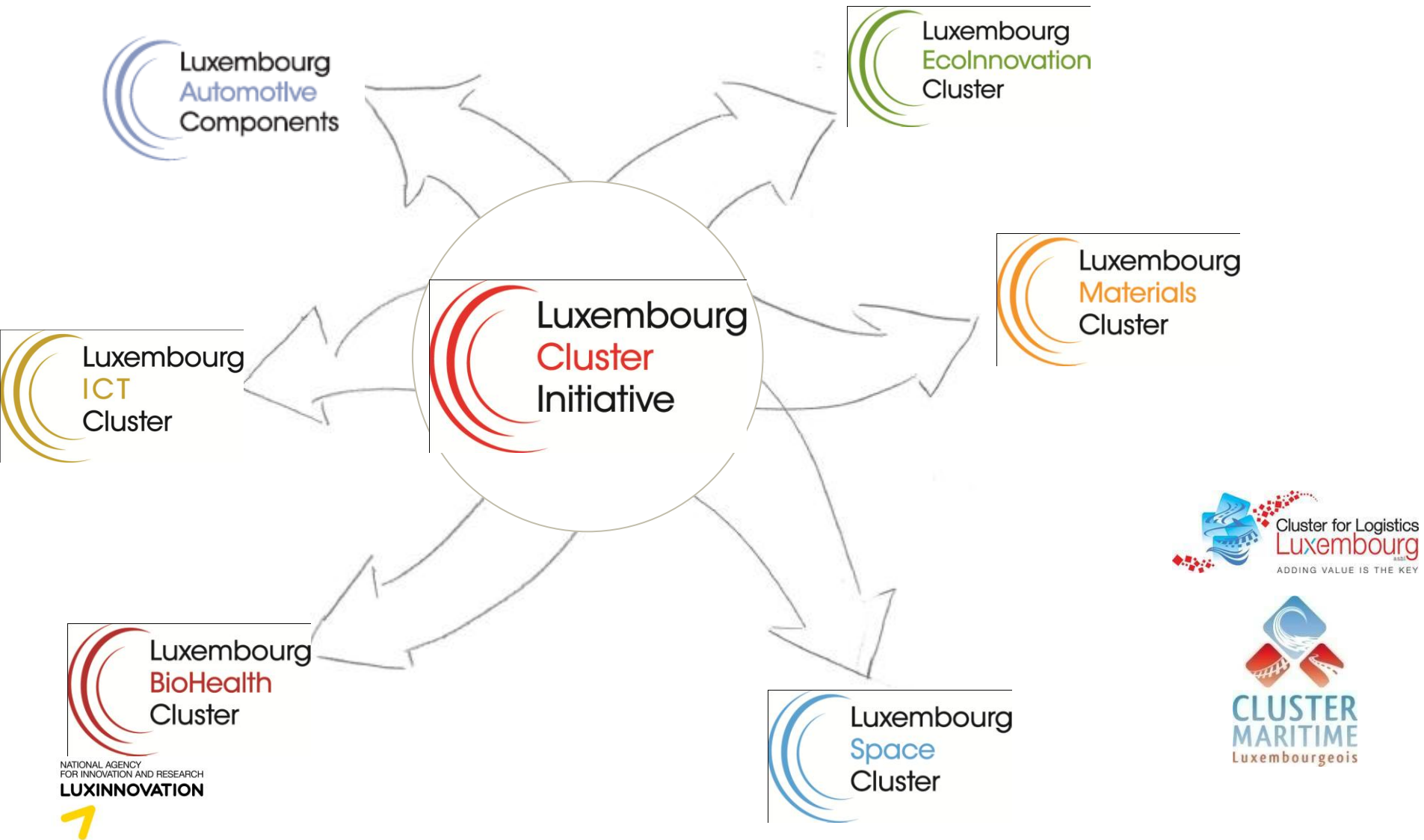


CLUSTERS

NATIONAL AGENCY
FOR INNOVATION AND RESEARCH
LUXINNOVATION



Clusters Powered by Luxinnovation



The Luxembourg ICT Cluster



Latest additions

- CubeLux
- **DigiCash**
- **DataCenter Luxembourg**
- **SES Broadband Services**
- Yapital
- eBrand Services FBS SA
- **Docler Holding**
- Europe4Startups

95 members

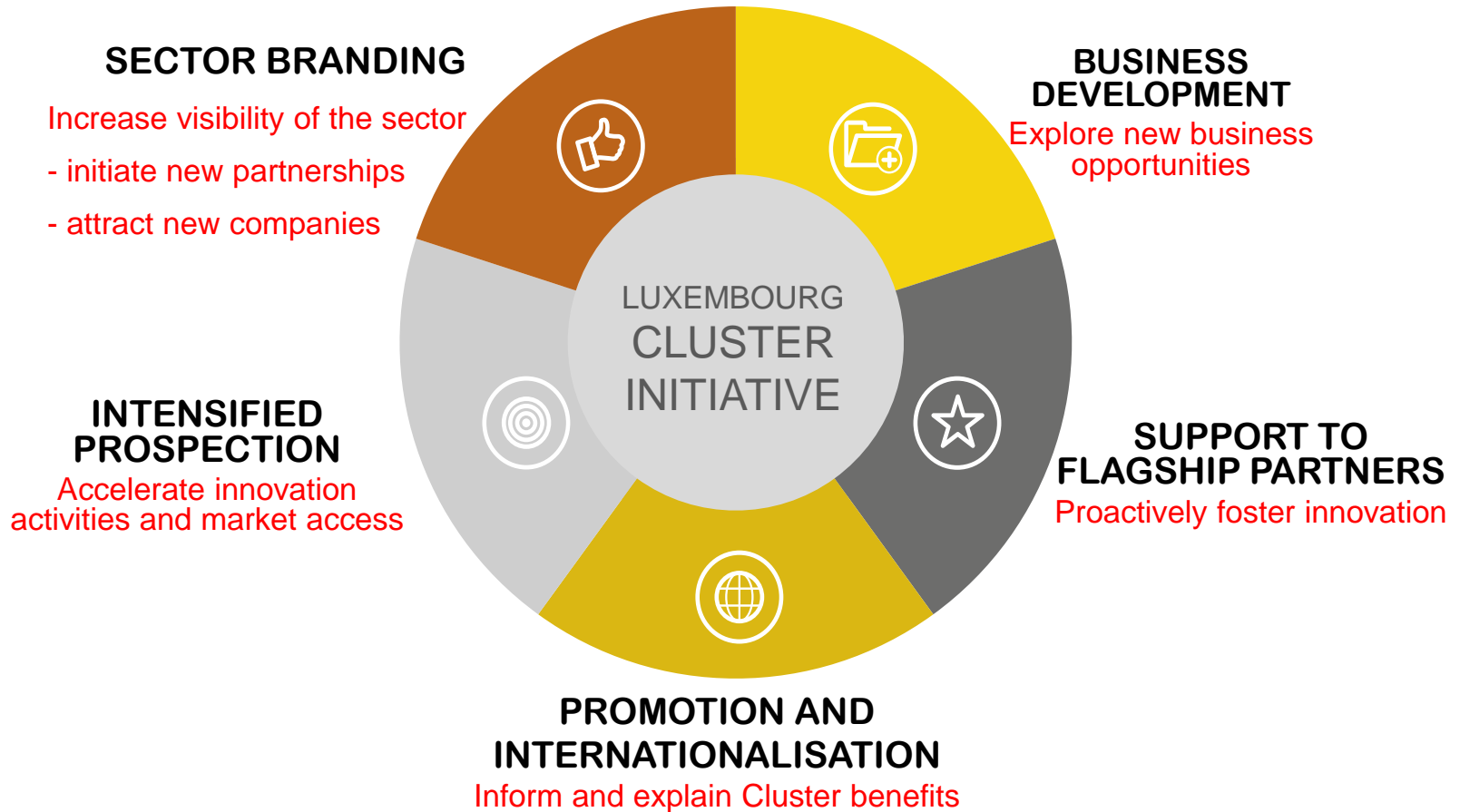
- 79 companies
- 1 individual
- 8 service/capital providers
- 4 public research organisations
- 2 strategic partners
- 1 VC

ICT in figures

- 7 ICT companies: 2.000+
- 7 Staff employed: 15.000+ (4% of active population)
- 7 Impact on GDP: 7%
- 7 New staff needed over the next 2 years: 600+

(figures from ICTluxembourg association)

LUXEMBOURG CLUSTER INITIATIVE



ICT Cluster – active topics

- 7 Governmental strategy definition “Digital Letzebuerg”
- 7 ICT security – national priority – cybersecurity agency
 - SnT – Security Reliability and Trust
 - CIRCL – *Computer Incident Response Centre Luxembourg*
 - CERT – Computer Emergency Response Team
- 7 FinTech – epayment/e-invoicing/e-commerce ...
- 7 Location Based Services (LBS)
- 7 Multimedia and Cross media publishing
- 7 Open/Big data – together with the ministries and in relation to H2020
- 7 Focus on start-ups (new competences and talents) and financing

ICT Cluster – active topics

7 ICT is transversal and linked to all other sectors/clusters

- Medical devices or AAL with BioHealth Cluster
- SMART Grid/Building/City with EcoInnovation Cluster
- HPC with Materials Cluster
- Common members with the Automotive Components and Space Clusters

7 INVEST IN CÔTE D'AZUR / Team Côte d'Azur

Sophia Antipolis, Nice, Éco-Vallée, Cannes, Grasse, Menton

7 Contact with embassies and LTIO's

7 CFIR – Copenhagen FinTech Innovation and Research

ICT Cluster – active topics

7 Events

- WorldHostingDays in Rust/Germany
- ICT Spring in Luxembourg
- The Summit in Dublin
- Innovate Finance in London
- Mobile World Conference in Barcelona
- World Publishing Expo in Hambourg

GLOBAL BRANDS OPERATING OUT OF LUXEMBOURG

Satellite connectivity



Financial services



Media



Communication



Online gaming & publishing



e-commerce



Domain names and registrars



Institutional



Network



Cloud storage



NATIONAL AGENCY
FOR INNOVATION AND RESEARCH
LUXINNOVATION

PROMOTION

NATIONAL AGENCY
FOR INNOVATION AND RESEARCH
LUXINNOVATION



Promotion



NATIONAL AGENCY
FOR INNOVATION AND RESEARCH
LUXINNOVATION



Focus on research and Innovation



Since 6 years
9 issues
15,000 copies



National innovation and research portal

Portail luxembourgeois de l'innovation et de la recherche
GRAND-DUCHÉ DE LUXEMBOURG

innovation.public.lu

Recherche: [] [OK]

Accueil | Plan du site | Flux RSS | Liens | FAQ | Feed-back | Newsletter | Contact

Recherche et innovation au Luxembourg

- Panorama de l'innovation et de la recherche au Luxembourg
- Acteurs clés
- Découvrir l'innovation et la recherche
- Jeunes scientifiques et entrepreneurs

Création d'une entreprise innovante

- Réaliser ses premières démarches
- Développer un plan d'affaires
- Trouver un hébergement adapté
- Bénéficier d'un accompagnement personnalisé
- Participer à des concours pour créateurs

Innovation et recherche en entreprise

- Comprendre les techniques pour la gestion de l'innovation
- Réaliser des transferts de technologies
- Protéger ses innovations
- Faire de la recherche dans le secteur privé
- Participer à des concours

Recherche publique

- Mobilité des chercheurs
- Valorisation des résultats de la recherche
- Pris pour les chercheurs
- Publications scientifiques de la recherche luxembourgeoise

Financer ses projets

- Financer la création d'une entreprise innovante
- Financer ses projets R&D et innovation en entreprise
- Financer les éco-technologies et le développement durable
- Financer la recherche publique
- Bénéficier des programmes européens

Trouver des collaborations

- Initier des collaborations publiques privées
- Trouver des partenaires
- Présenter son entreprise ou unité de recherche

Découvrir les clusters innovants

- Automotive Components
- BioHealth Cluster
- EcoInnovation Cluster
- ICT Cluster
- Materials Cluster
- Space Cluster
- Cluster for Logistics
- Cluster Maritime
- Innovation et artisanat

AGENDA

- Formation "Outil de risk management TISSEM Teico" développé avec IIR et les opérateurs Néocom@
- 14-11-2014
- Conférence "Semaine de la Qualité 2014@"
- 17-11-2014
- Conférence

COMPÉTENCES, TECHNOLOGIES, CONTACTS

Votre répertoire des entreprises innovantes et unités de recherche publiques au Luxembourg.

[Trouver des partenaires](#)

A la Une

"Betriber & CO2": Faire un bilan des émissions en entreprise et découvrir des champs d'actions

14-11-2014

Betriber & Umwelt Le CRP Henri Tudor a développé "Betriber & CO2", un outil en ligne simple et gratuit permettant aux entreprises d'effectuer de manière autonome un premier bilan de leurs émissions de gaz à effet de serre et de repérer des

Key actors
Up-to-date information
Finding partners
Success stories

www.innovation.public.lu

FUTURE PERSPECTIVE: « CITÉ DES SCIENCES »



Integrated Concept

- Higher Education and Research
- Student life
- Innovative start-ups
- Support Services
- Cultural life, sports and leisure

Will host

- University of Luxembourg
- LIST
- CEPS/Instead
- Technoport, the National Incubator
- RDI support organisations



**Restructuring of
industrial
wasteland
of Southern
Luxembourg**

**Total investment:
about 1 billion
EUR**

Jean-Paul Hengen

LUXINNOVATION GIE

7, rue Alcide de Gasperi
L-1615 Luxembourg

T (+352) 43 62 63 - 660

jean-paul.hengen@luxinnovation.lu



www.luxinnovation.lu



[www.linkedin.com/
company/luxinnovation-gie](http://www.linkedin.com/company/luxinnovation-gie)



[www.facebook.com/
Luxinnovation.Making.Innovation.Happen](http://www.facebook.com/Luxinnovation.Making.Innovation.Happen)



[www.twitter.com/
Luxinnovation](http://www.twitter.com/Luxinnovation)

Thank you!

Luxinnovation receives support from



European Union
European Regional Development Fund
Investing in your future

Luxembourg – Constant evolution



AGRICULTURE



INDUSTRIAL
DIVERSIFICATION



INDUSTRIALISATION –
IRON AND STEEL



FINANCIAL SECTOR



FOCUS ON KEY
INNOVATIVE SECTORS

Luxembourg as start-up location

- 7 Central European location
- 7 Stable business environment
- 7 State-of-art ICT infrastructure
- 7 Favourable taxation
- 7 Attractive public aid measures
- 7 Multicultural, multilingual population with multinational education backgrounds
- 7 Need for public research stimulation (spin-offs and start-up projects)
- 7 Lack of seed funding ("High-Tech Gründerfonds")
- 7 Need for stronger entrepreneurial spirit

7 ...

MAJOR RDI PLAYERS IN LUXEMBOURG:

**Did you know
it's from
Luxembourg?**

One World Tower is based on Giant Steel Sections produced in Luxembourg

- ArcelorMittal's steel plant in Differdange is the only mill worldwide capable of producing the high-strength recycled giant steel beams for the columns of New York's Freedom Tower.



MAJOR RDI PLAYERS IN LUXEMBOURG:

**Did you know
it's from
Luxembourg?**

Luxembourg's Contribution to the World Record Breaking Tower

- Guardian Luxguard S.A. plants based in Luxembourg were chosen to provide approx. 600.000 m² of coated glass for the construction of the Burj Khalifa Tower in the United Arab Emirates.



MAJOR RDI PLAYERS IN LUXEMBOURG:

Did you know
it's from
Luxembourg?

Secure in dizzy heights
thanks to Luxembourg
engineering

- SECALT-TRACTEL® provides its clients in more than 130 countries with lifting and handling, and suspended working platforms and fall arrest safety equipment



MAJOR RDI PLAYERS IN LUXEMBOURG:

Did you know
it's from
Luxembourg?

Secure inside the car thanks to sensors developed in Luxembourg

- 7 IEE is a global leader in automotive safety sensing systems for occupant detection and classification with products such as OC™, BodySense™, Seat Belt Reminders and Protecto™, enhancing safety in vehicles produced by major car manufacturers worldwide.

