

WHY CHOOSE LUXEMBOURG?

CHAMBER OF COMMERCE LUXEMBOURG
cc.lu

LUXEMBOURG LET'S MAKE IT HAPPEN
luxembourg.public.lu

LUXEMBOURG TRADE & INVEST
tradeandinvest.lu

INTERNATIONAL FINANCIAL EXPERTISE



26.5% OF GDP

FROM 26 COUNTRIES



ALMOST 3,500 INVESTMENT FUNDS MANAGE NET ASSETS OF

€5.9 TRILLION (ALFI, 2021)

51,700 EMPLOYEES (STATEC)



CREATED IN 2016,

Luxembourg Green Exchange

(LGX) IS THE WORLD'S LARGEST PLATFORM FOR GREEN AND SUSTAINABLE SECURITIES.

DIVERSE ECONOMY

THE CREATIVE INDUSTRIES EMPLOY

14,600 PEOPLE



50% OF COMPANIES IN THE SECTOR ARE UNDER 10 YEARS OLD



9 INDUSTRY CLUSTERS



BIO-HEALTH SECTOR

136 COMPANIES, HALF OF WHICH ARE UNDER

10 years old

(LUXINNOVATION 2021)

"Luxembourg is a European capital city."
Michel Gonzalez and Xavier Michely, KEYM



LUXEMBOURG CITY IS HOME TO

13 EUROPEAN INSTITUTIONS



THE SPACE SECTOR COMPRISES

50 companies

AND RESEARCH LABORATORIES WITH A TOTAL WORKFORCE OF

800 PEOPLE

(TRADE & INVEST)

"Luxembourg has a very strong space ecosystem (companies, university, space agency), with a high political support."

Sebastain Ströhl and Carlos Manuel Entrena Utrilla, Plus Ultra Space Outposts

STABLE AND POLITICALLY NEUTRAL

"Luxembourg's stable legal system paves the way for long-lasting business ventures. The country has the assets to attract the profiles we need."

Dr. Chalom Sayada, Advanced Biological Laboratories (ABL)



8 PRIME MINISTERS SINCE 1945

ICT / DIGITALISATION



Over 9 in 10 households

HAVE ACCESS TO BROADBAND (97% IN 2021, EUROSTAT)



890,000 MOBILE PHONE CONTRACTS IN 2020 FOR AROUND 626,000 INHABITANTS (WORLD BANK)



THE SUPERCOMPUTER

Meluxina

DEVELOPED IN 2021 HAS CALCULATING POWER OF 18 PETAFLOPS (18 TRILLION OPERATIONS PER SECOND) AND IS RANKED AMONG THE WORLD'S TOP

50 COMPUTERS FOR HIGH-PERFORMANCE CALCULATION



23 DATA CENTRES OF WHICH 9 ARE TIER IV CERTIFIED



310 COMPANIES OPERATING IN CYBERSECURITY INCLUDING 75 START-UPS (24%) (LUXINNOVATION 2020)

OPEN ECONOMY

30% OF NON-FINANCIAL RETAIL COMPANIES ARE UNDER FOREIGN CONTROL (STATEC)



LUXEMBOURG EXPORTS OVER 60% OF ITS GOODS AND SERVICES (STATEC)

SUPPORT FOR START-UPS AND SMES



over 2,000 START-UPS FROM 80 COUNTRIES HAVE APPLIED FOR THE FIT4START PROGRAMME SINCE ITS LAUNCH IN 2010

"The business environment in Luxembourg is very dynamic. The ecosystem is favourable to SMEs and several sectors of the future are booming."
Christophe Timmermans, SolarCleano



THE COUNTRY HAD 507 START-UPS IN 2020, OF WHICH 23 (5%) WERE OPERATING IN THE "GREEN TECHNOLOGY" FIELD (STARTUPLUXEMBOURG)



3 programmes DEVELOPED BY LUXINNOVATION, THE NATIONAL INNOVATION AGENCY, TO ALLOW SME TO BECOME MORE COMPETITIVE: FIT4DIGITAL, FIT4INNOVATION AND FIT4SUSTAINABILITY

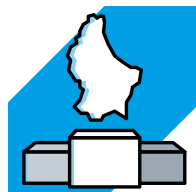
COMPETITIVENESS



WITH 25 RECOGNISED PROJECTS, LUXEMBOURG IS EUROPE'S No. 1 COUNTRY FOR FOREIGN DIRECT INVESTMENTS PER INHABITANT (3,94 PROJECTS PER 100,000 INHABITANTS, EY)

"Luxembourg allows us to position ourselves quickly in the various countries we target."

Samuel Eustachi, Philippe Vallogia and Maxime Belair, Jobook



LUXEMBOURG CONSISTENTLY RANKS IN THE WORLD'S TOP 20 MOST COMPETITIVE COUNTRIES (WEF, IMD, EUROPEAN COMMISSION, ETC.)



Economic information on the Grand Duchy



I want to set up or invest in Luxembourg



Luxembourg, dynamic economy

Chambre of Commerce
7 rue Alcide de Gasperi, L-1615 Luxembourg
Tel.: (+352) 42 39 39-1 ; Email: chamcom@cc.lu ; www.ccl.lu
September 2022

EUROPEAN LOGISTICS HUB



947,000

TONNES OF GOODS TRANSPORTED IN 2020 ON

13,588

FLIGHTS, I.E. A RISE OF OVER

6%

IN AIR FREIGHT VERSUS 2019



LUXEMBOURG RANKS

24th

OF 160 COUNTRIES (LOGISTICS PERFORMANCE INDEX 2018)



60%

OF GOODS TRANSPORTED BY LORRY ARE BOUND FOR INTERNATIONAL DESTINATIONS



800

DIRECT FLIGHTS PER WEEK FROM LUXEMBOURG AIRPORT TO

104

DESTINATION

EDUCATION



44.5%

OF INHABITANTS AGED BETWEEN 15 AND 64 HAVE A HIGHER EDUCATION DIPLOMA (2021), WHICH IS ABOVE AVERAGE FOR THE EU (29.5%) (EUROSTAT)



19

international schools

IN LUXEMBOURG, 6 OF WHICH ARE STATE-FUNDED

HIGH-QUALITY INFRASTRUCTURE



PUBLIC INVESTMENT REPRESENTS

over 4%

OF GDP

"Luxembourg is a great Startup Hub that puts a lot of effort into promoting innovative ideas and projects, with excellent infrastructure."

Maroun Altekly and Raphaël Scheuren, BlocHome

QUALITY OF LIFE AND SAFETY



LUXEMBOURG CITY IS RANKED

18th

OF 231 GLOBAL CITIES FOR QUALITY OF LIFE (MERCER - QUALITY OF LIVING)

WHAT DO RESIDENTS OF LUXEMBOURG-CITY SAY:



95%

ARE HAPPY TO LIVE THERE

94%

ARE SATISFIED WITH THE STATE OF CLEANLINESS (HIGHEST SCORE IN THE EUROPEAN UNION)



92%

FEEL SAFE ON PUBLIC TRANSPORT (EUROBAROMÈTRE)



THE UNIVERSITY OF LUXEMBOURG (FOUNDED IN 2003) IS RANKED

25th

OF 540 UNIVERSITIES UNDER 50 YEARS OF AGE (TIMES HIGHER EDUCATION, YOUNG UNIVERSITY RANKINGS)

"Luxembourg is a springboard for creative ideas and innovations."

Thomas Lange, Culture Booking



THE R&D SECTOR EMPLOYS OVER **7,000** PEOPLE. RESEARCHERS REPRESENT

1.3%

OF THE TOTAL WORKFORCE (EUROSTAT)

"Luxembourg's intellectual property regulations are very advantageous for patent holders."

Constantin Notman, OCSIAI

ADMINISTRATIVE TASKS MADE EASY



LUXEMBOURG IS RANKED

4th IN EUROPE

FOR THE **perceived quality**

OF ITS PUBLIC SERVICES (EUROBAROMÈTRE 2016)

RESEARCH AND INNOVATION

A LAND OF INDUSTRY

STEEL INDUSTRY ROOTED IN LUXEMBOURG SINCE

1870



ARCELOR MITTAL IS THE 6TH LARGEST PRIVATE EMPLOYER WITH

3,460

EMPLOYEES (JANUARY 2022)

EVERY YEAR, LUXEMBOURG'S POPULATION GROWS BY AROUND

2%



POPULATION GROWTH BETWEEN 1 JANUARY 2012 AND 1 JANUARY 2022

23%

POPULATION

MULTICULTURAL AND MULTILINGUAL

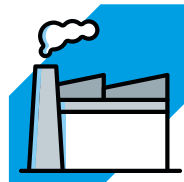
51% OF RESIDENTS SPEAK **3** OR MORE LANGUAGES (EUROSTAT)



LUXEMBOURG RANKS

8th

OF 134 COUNTRIES FOR COMPETITIVENESS IN TERMS OF ATTRACTING, RETAINING AND GROWING TALENT (GLOBAL TALENT COMPETITIVENESS INDEX)



900

INDUSTRIAL COMPANIES EMPLOYING OVER

38,000

EMPLOYEES (STATEC)



INDUSTRIAL COMPANIES' ANNUAL INVESTMENT AMOUNTS TO

€570

MILLION (EUROSTAT)



THE INDUSTRIAL SECTOR REPRESENTS

6.7%

OF GDP AND

7.8%

OF THE COUNTRIES' WORKFORCE (OVER 36,000 PEOPLE) (STATEC)

THE FOREIGN POPULATION REPRESENTS **47%** OF INHABITANTS AND **179**



nationalities



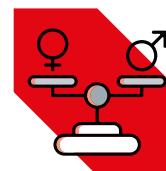
74%

OF THE WORKING POPULATION IS FOREIGN (STATEC)

"Luxembourg's multiculturalism makes it the perfect place to start a global company."

Roman Salvi and Loris Beaumont, Biscuit app

GENDER EQUALITY



0.7%

GENDER PAY GAP - THE SMALLEST GAP IN THE EUROPEAN UNION

(GENDER PAY GAP EUROSTAT)