



Poland Luxembourg Business and Financial Forum

Regent Warsaw Hotel
08 May 2014



STREAM 2:

Presentation of the Luxembourg Clean Technologies Sector



Simone Polfer

*Deputy Director for Clean technologies
Ministry of Economy*

Agenda



- **Luxembourg believes in clean technologies**
- **State Aid for Research, Development and Innovation**
- **Innovative materials**
- **Rational use of natural resources**
- **Luxembourg Cluster Initiative & Goals**
- **Incubators and business location for clean-tech**



Luxembourg believes in Clean technologies



- Luxembourg ranks 5th in the Innovation Union Scoreboard 2014
- 40% of R&D and investment projects that received co-financing were clean-tech projects
- Luxembourg believes in R&D for clean technologies
- Luxembourg is multilingual and has a multinational workforce
- Luxembourg is a breeding ground for disruptive technologies and courageous innovations
- Luxembourg has state-of-the-art IT and logistic infrastructures

State Aid for Research, Development and Innovation



- Research & Development projects or programmes -> 25% to 80% of RDI costs
- Technical feasibility studies
- Protection of technical industrial property (first filing)
- Aid for young innovative enterprises -> 50% of financial needs up to 1 mio €
- Innovation advisory services and innovation support services
- Temporary secondment of highly qualified personnel
- Process and organisational innovation in services
- Investment in innovation clusters and animation of innovation clusters
- "De minimis" measures

Innovative materials



Fields covered

- Technically and functionally performing materials
- Materials displaying reduced environmental and sanitary impacts during their entire life cycle (economy of resources, energy, recycling, mastering of environmental and health hazards)

Innovative materials



AGILIS ENGINEERING



- **New Advanced Materials**
Composite materials, conductive polymers, nano-materials
- **Bio-materials**
Bio-sourced polymers, biodegradable materials, based on systems-biology research
- **Green Building**
Insulating materials, steel and glass construction, timber, innovative cements
- **Intelligent Design**
Cradle to cradle approach, life cycle analysis, CO₂ footprint reduction

Rational use of natural resources



- **Biomass**
Innovative gasification and combustion technologies
Biomass to energy, biogas, biofuel, sewage sludge treatment
- **Sustainable mobility**
ICT for sustainable mobility
Electromobility (vehicles and infrastructures)
Energy efficient propulsion systems
- **Energy storage and smart grid solutions** [8]
Innovative chemical and/or thermal long term storage
Smart grid solutions improving the rational use of energy
- **Innovative control systems for building applications**
Smart homes, Domotic

Rational use of natural resources



- **LED technology (Light Emitting Diodes)**
Highly efficient LED solutions for industrial applications
- **PV (Photovoltaics)**
Thin film technologies and cost efficient PV cells
- **Water treatment**
Innovative and cost efficient technologies for water treatment
- **CHP (Combined Heat and Power production)**
Innovative CHP solutions (micro-CHP, fuel cells, heating pumps...)

Luxembourg Cluster Initiative



Luxembourg
EcoInnovation
Cluster



Luxembourg
Automotive
Components



Luxembourg
ICT
Cluster

Luxembourg
Cluster
Initiative

Luxembourg
Materials
Cluster



1
0



Luxembourg
BioHealth
Cluster



Luxembourg
Space
Cluster



Goals of the Cluster Initiative 2014-2020



Focus of the Ecoinnovation Cluster



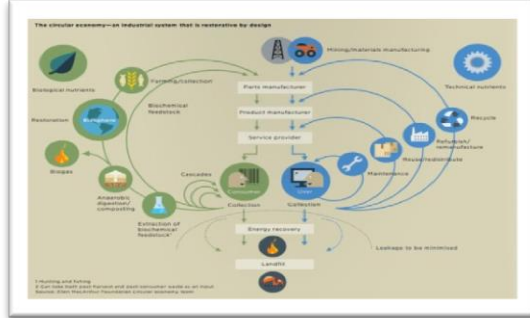
**STRENGTHEN THE LUXEMBOURG
CLEAN-TECH SECTOR**



Mobility



**Circular
Economy**



[12]

**Sustainable
Cities & Smart
Technologies**



Two incubators are active in Luxembourg



technoport[®]
business incubator | coworking | fab lab



- **Technoport in Esch/Alzette
Esch/Belval:
IT / Internet Oriented**

eco **start**
centre d'entreprise et d'innovation



- **Ecostart Innovation Centre
in Foetz:
Industry / Service Oriented**

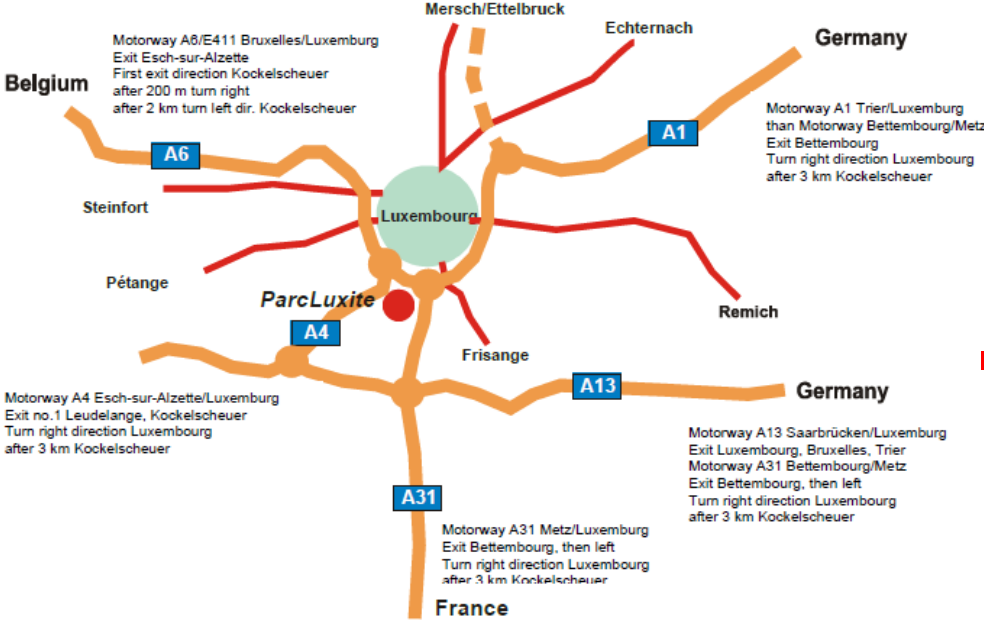
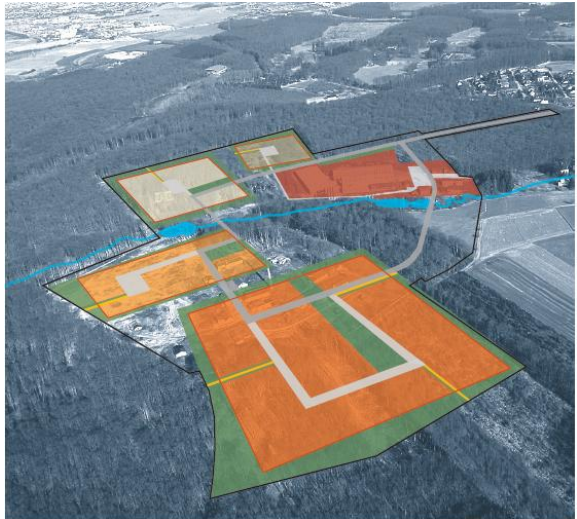
13

One interdisciplinary incubator planned – focus on biomedical sciences, but will also host ICT and cleantech companies that need wet labs

A public/private partnership for your new location in Luxembourg



Constructable land surface :
131.795 m2



- High-tech, clean- and biotechnology, R& D and services



THANK YOU FOR YOUR ATTENTION
email : Simone.Polfer@eco.etat.lu

