



# KIC-Europe

Korea Research & Innovation Centre-Europe

## R&D Capabilities of Korea & Korea-EU R&D Cooperation

Countries' Seminar | July 4, 2014 | Luxembourg Chamber of Commerce

**Dr.-Ing. Giwon On**  
President of KIC-Europe

Rue de la science 14, 1040 Brussels, Belgium  
[www.kiceurope.eu](http://www.kiceurope.eu)



Joint Press Conference in Brussels, November 8, 2013  
→ More co-work in the Science and Technology field

# KIC-Europe [Introduction]

## Background

- Increasing need for **strengthening international cooperation with the EU** after the signing of FTA with the EU, particularly in the field of Economy, Science & Technology, with a view to enlarging partnership in terms of world-wide collaboration
- **Europe-based platform** for Korea-EU R&D Innovation policies on behalf of the Korean government with a motto of **“the creative economy”**

## Agenda

### R&D

#### Promotes Korea-Europe Research Collaboration

- Support Local Researchers for Forming Consortiums and Joint Research Programs
- Establish long-terms strategies by analyzing Korea-EU related policies

### Innovation

#### Supports Technology Transfer – SMEs Entering the European Market

- Provide On-site integrated consulting service for local advanced technology transfer and commercialization
- Implement Tailor-made service for start-up and ventures by cooperating closely with the governmental agencies

### Policy

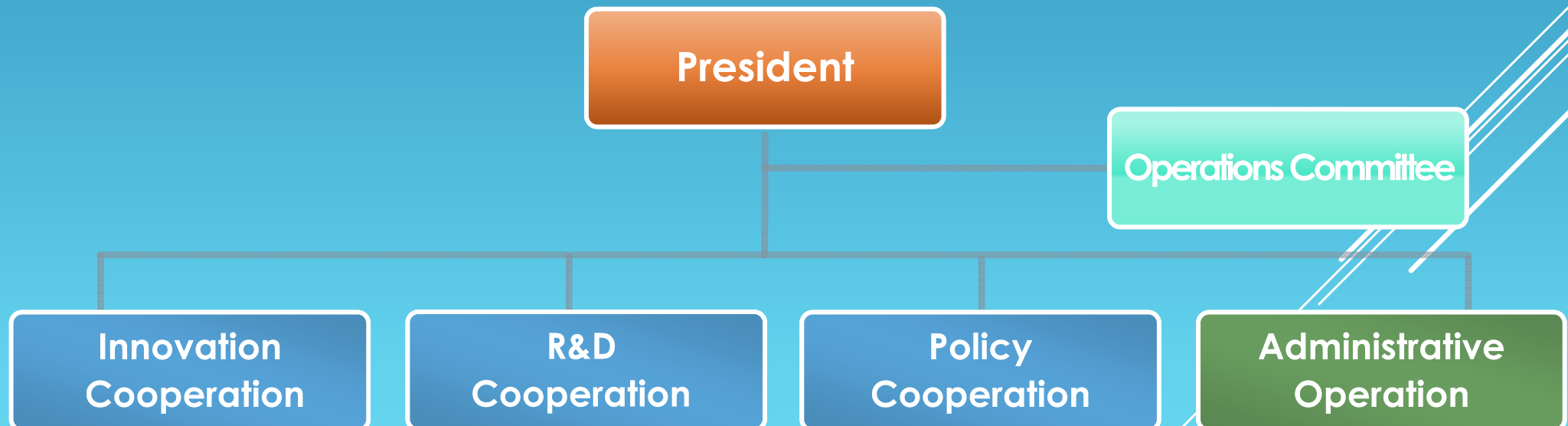
#### Coordinates policies – Collects relevant information

- Build network with EU institutions for Korea-EU cooperation infrastructure
- Establish and Analyze Database for a rapid response to changing EU landscape

# KIC-Europe [Introduction]

## Operations

- **Location:** EC Neighborhood → Easy to access the EC  
Rue de la Science 14 1<sup>st</sup> floor
- **Type:** Non-profit Organization (since 22.12.2013)
- **Organization Chart:** President , Board of Directors, Four Divisions
- **Employees:** 15 employees (Local Recruitment & Participating organizations\*)  
\*as of 2014: NRF Korea, KIST-Europe, KISA, ETRI, KIMM, iPET, KRICT, KISTEP





Electronics and Telecommunications Research Institute



Korea Internet & Security Agency



Korea Institute of Science and Technology-Europe



National Research Foundation of Korea



Korea Institute of Machinery and Materials



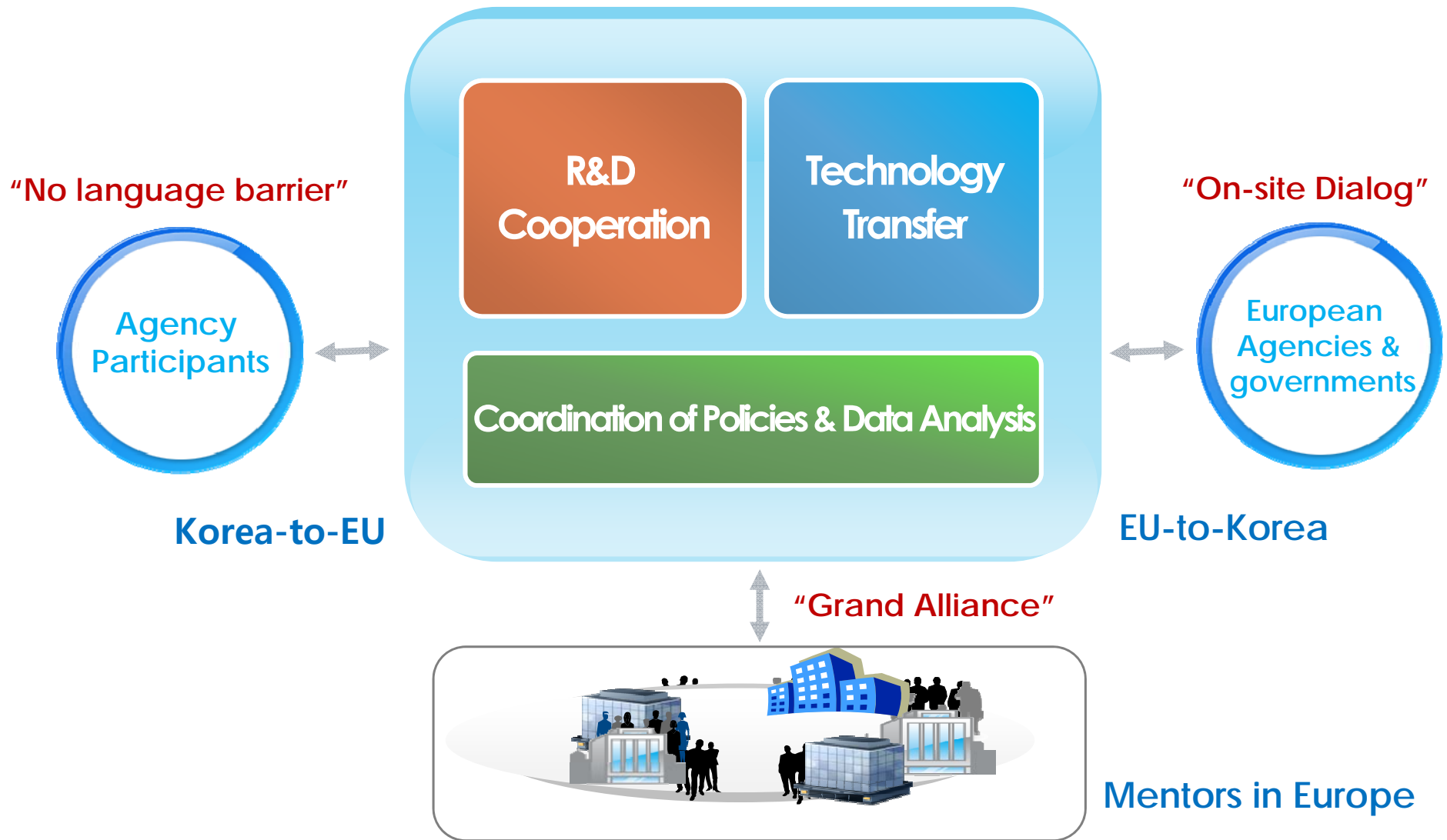
Korea Institute of Science & Technology Evaluation and Planning



Korea Research Institute of Chemical Technology



Korea Institute of Planning and Evaluation for Technology of Food, Agriculture, Forestry and Fisheries



➔ Providing Advice on Research Collaboration for Domestic Researchers

- ◉ Help Desk | HORIZON 2020 Training Support
- ◉ Support for forming Consortiums, Consulting Intellectual Property Law, Marketing and Localization for Start-ups and Ventures

➔ **NCP Coordinator** ICT | BT | SME NCP (National Contact Point)

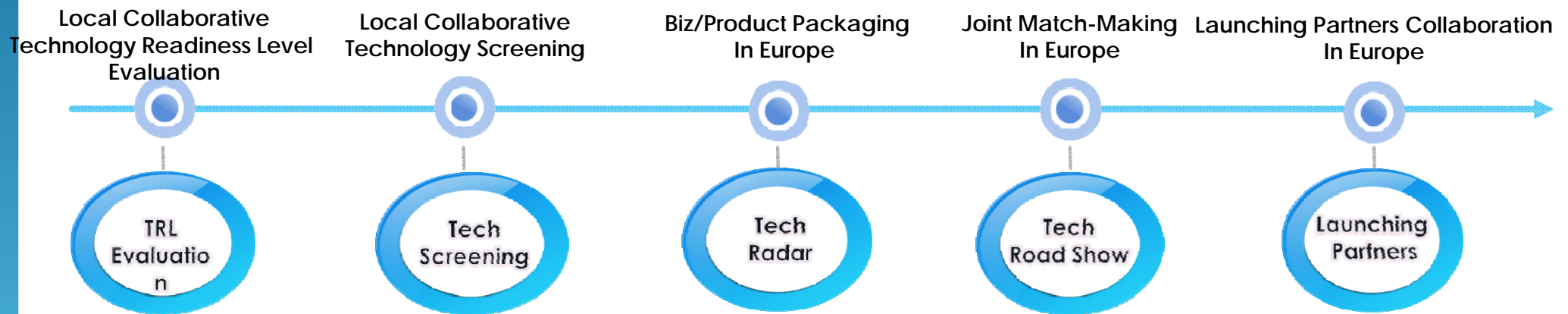
- ◉ Consulting on planning Consortiums and Business –Related Policies
- ◉ Development of Roadmap on the R&D policies (Korea-EU) and the topic selection of R&D Cooperation

➔ **Research Collaboration** Planning and Coordination of collaboration with European Institutes

- ◉ Bilateral (Multi-lateral) Research Collaboration: S&T, ICT, Research Commercialization
- ◉ "Collaborative Labs" Model



→ Participant Agencies: Identification of Best Technologies for the European Market → Introduction to EU



→ **Europe Collaboration Network** Engagement in Technology Transfer experts / Agencies In Europe

- Europe Mentors: Two-step Mentoring (Group + 1 to 1 Mentoring)
- Start-Up Incubator: “Near-to-Market”



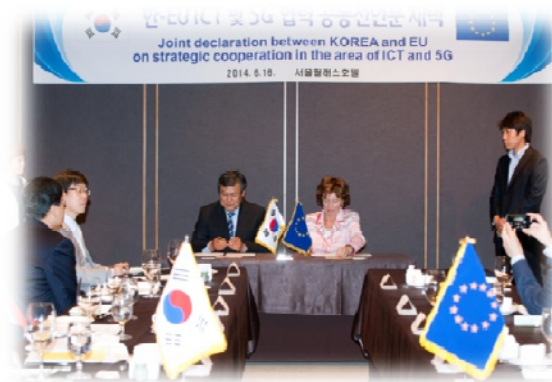


## → Build Systematic EU-Based Database

- Publish EU Research/Technology/Market Analysis
- Launch Newsletter, Webinar, APPs Service

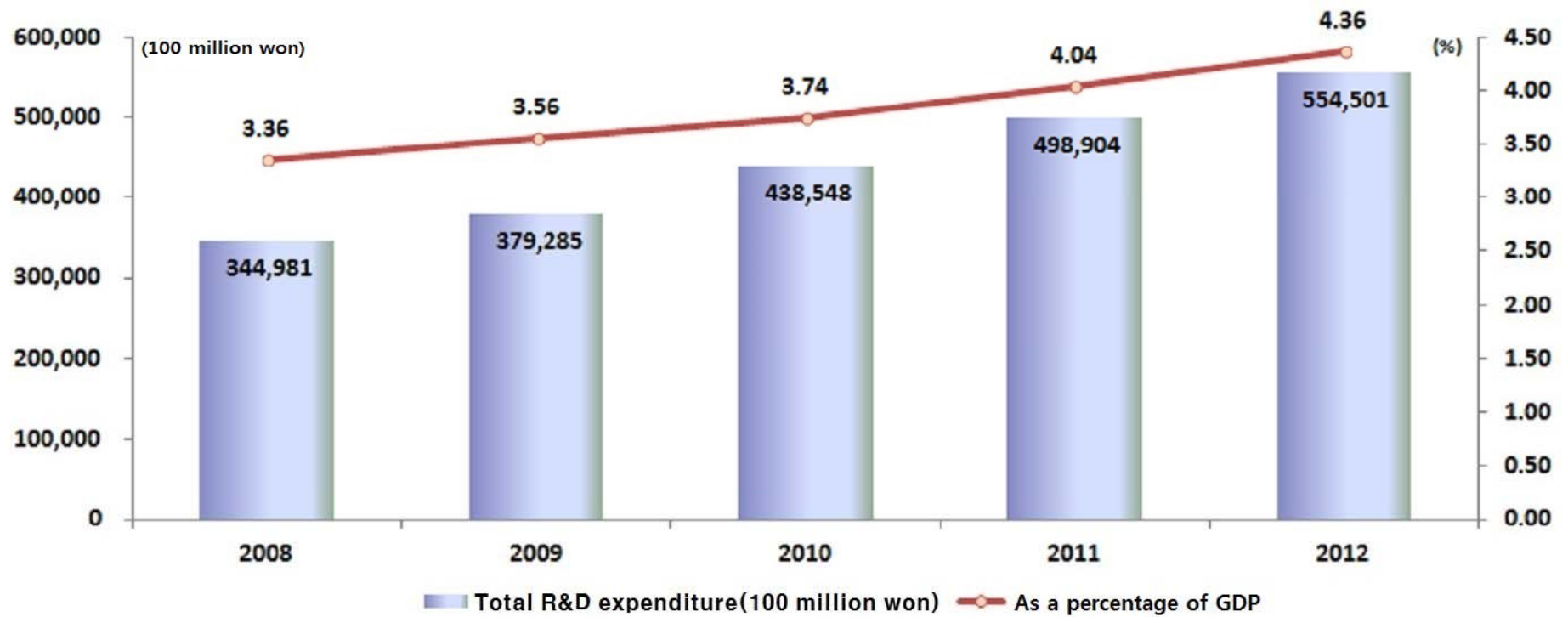
## → Broaden & Strengthen EU Network in each field

- Build Database by Holding a Monthly Future Forum: by Nation/ Field
- Strengthen Cooperation with KOTRA, KIST-Europe, KIAT-Europe, Europe-based Science Associations, etc.



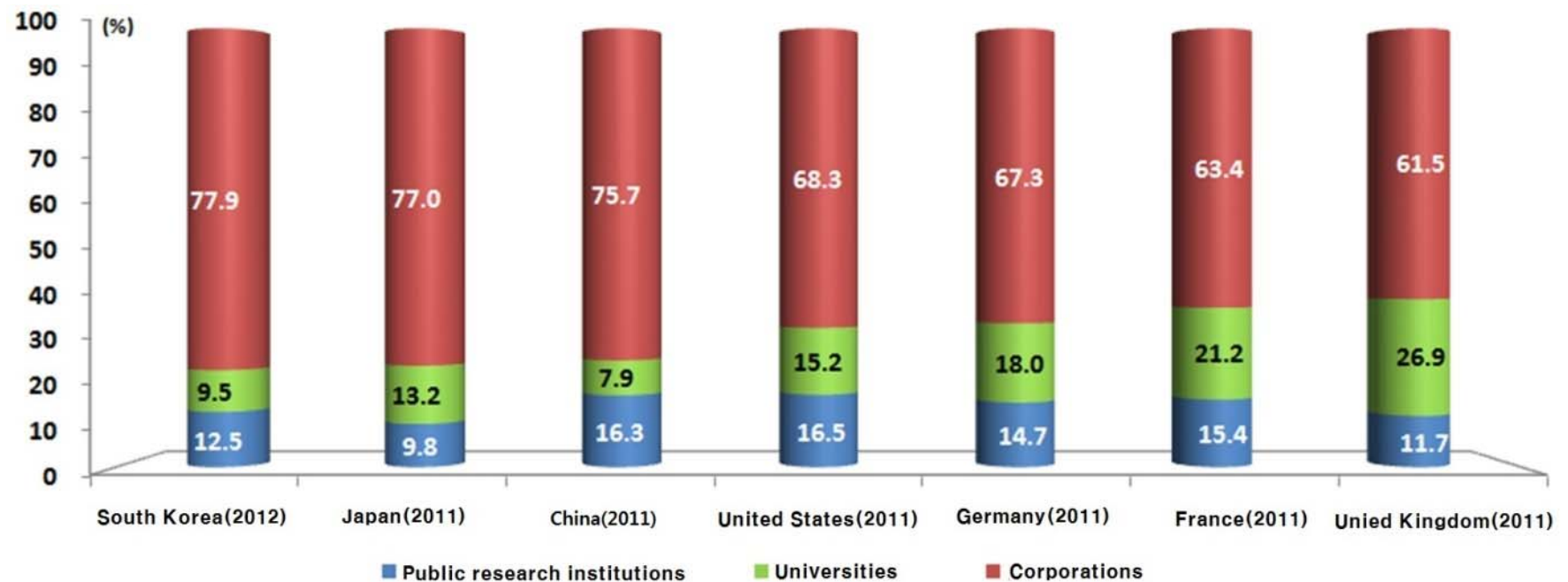
→ Total R&D Expenditure

- In 2012: 55,450 billion won (equivalent to \$49.2 billion)
- The second-highest R&D investment ratio(4.36) after Israel



→ International Comparison of R&D Expenditure by Actor

- Corporations: 43,222.9 billion won (77.9%)
- Public Research Institutions: 6,950.3 billion won (12.5%)
- Universities: 5,276.9 billion won (9.5%)

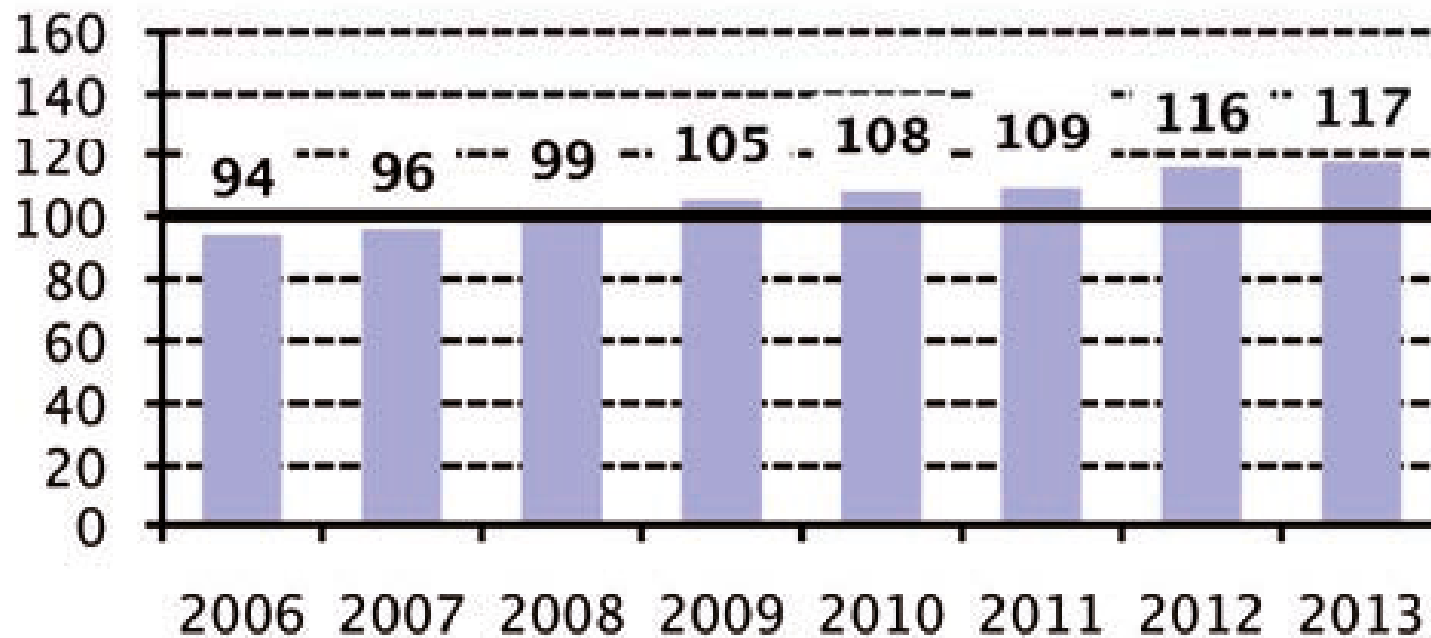


## R&D Investment by field (2012)

Field	Government-Assisted Fund (million won)			Number of Projects	Research Fund per Project (million won)
	Research Activities (%)	Research Infra (%)	Total (%)		
IT	242,727 (13.2)	14,202 (3.4)	256,931 (11.4)	2,011	130.6
BT	650,076 (35.7)	153,324 (36.1)	803,400 (35.5)	5,615	136.5
NT	178,106 (9.7)	43,274 (10.2)	221,380 (9.8)	1,731	128.6
ET	135,332 (7.4)	73,245 (17.2)	208,577 (9.3)	864	109.8
ST	68,164 (3.7)	4,800 (1.1)	72,964 (3.2)	931	166.7
CT	17,144 (1.0)	1,094 (0.3)	18,283 (0.8)	169	106.7
Other	536,247 (29.3)	135,278 (31.7)	672,526 (30.0)	7,651	144.0
<b>Total</b>	<b>1,827,842</b>	<b>426,218</b>	<b>2,254,060</b>	<b>18,972</b>	<b>134.8</b>

→ Innovation Performance by EC Innovation Scoreboard

- South Korea is relatively more innovative than the EU and the innovation is further increasing
- From 2009 onwards the performance gap has been reversed into a performance lead

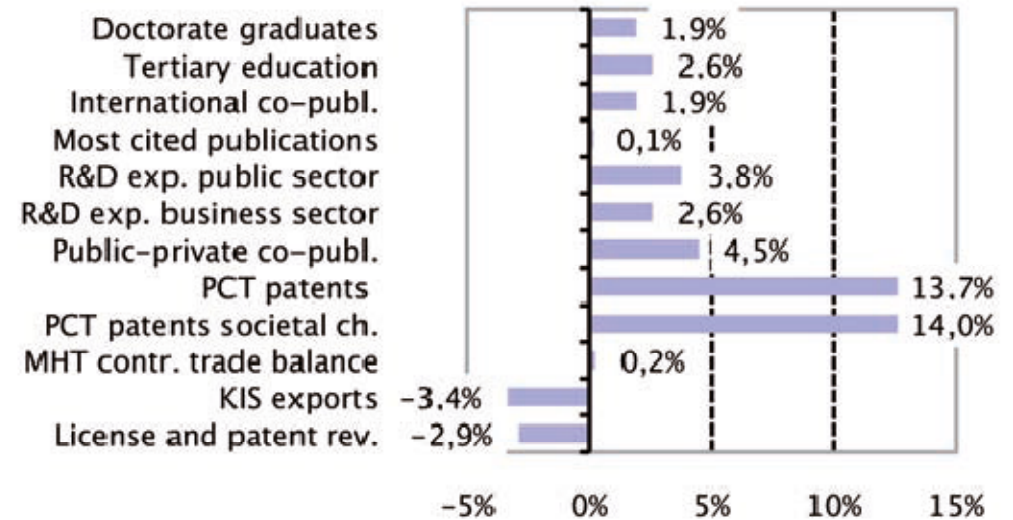
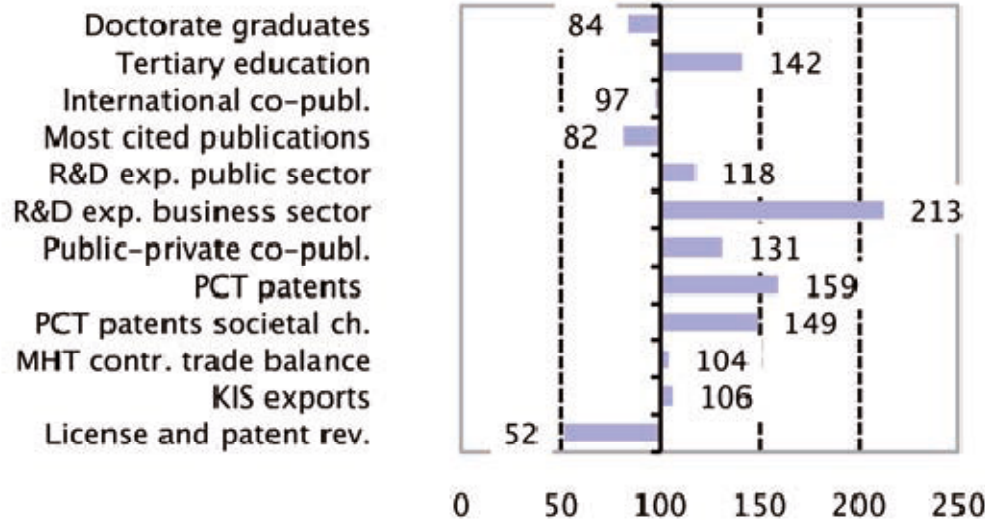


## → Performance Lead

- South Korea is Performing better on 8 indicators

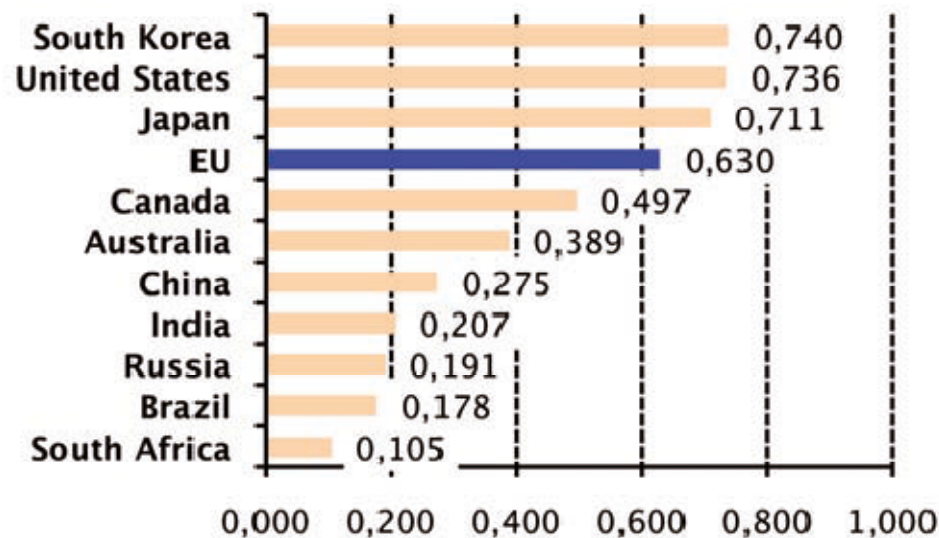
## → Change in Performance Lead

- The Relative growth performance has improved for 10 indicators

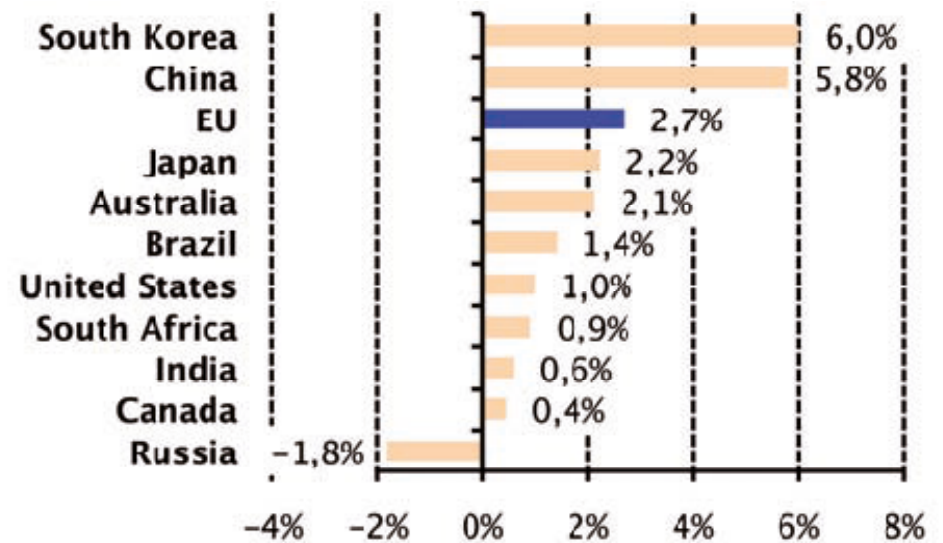


- ➔ A Comparison of the EU with the main global economic partners with the EU
  - ◉ Dominating in indicators capturing business activity as measured by R&D expenditures in the business sector, Public-private co-publications and PCT patents but also in educational attainments

Global Innovation Performance



Global Innovation Growth Rates



# Thank You!

## KIC-Europe

Dr. Gi Won On

T. +32 2 880 3917

E. [gwon@kiceurope.eu](mailto:gwon@kiceurope.eu)

Rue de la science 14, 1040 Brussels, Belgium

[www.kiceurope.eu](http://www.kiceurope.eu)