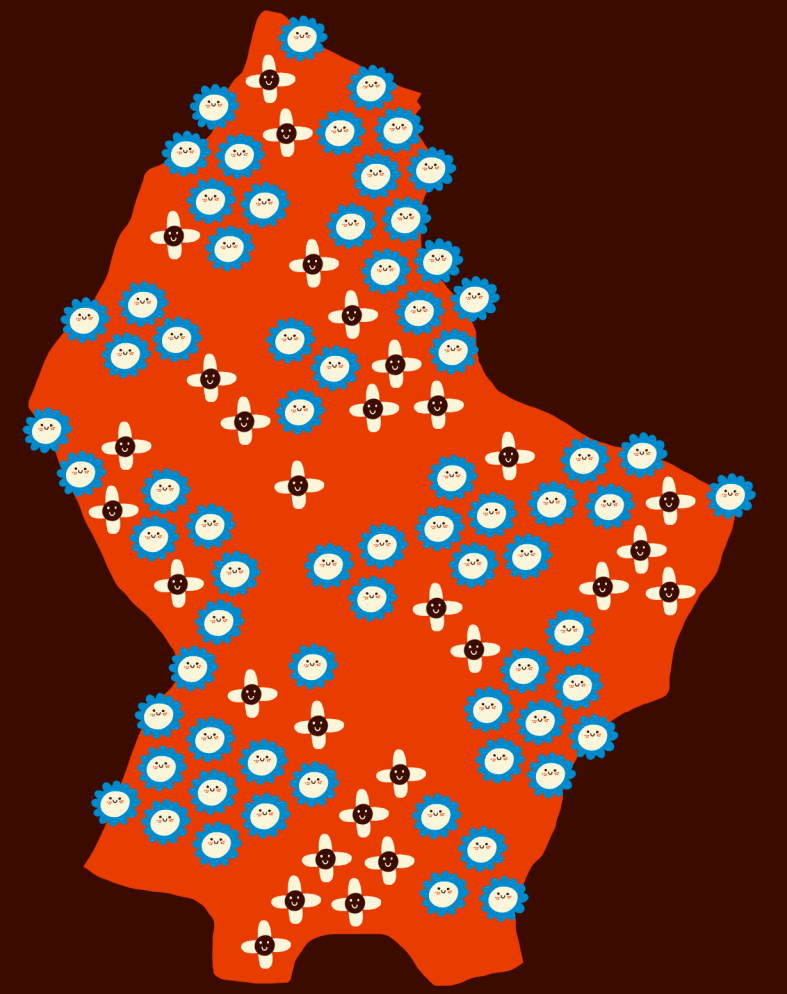


# FAMILY BUSINESSES



## TODAY

THE BOARDS OF DIRECTORS OF FAMILY BUSINESSES, WHETHER YOUNG OR OLD ARE COMPOSED MOSTLY OF PEOPLE WHO ARE NOT PART OF THE FOUNDING FAMILY

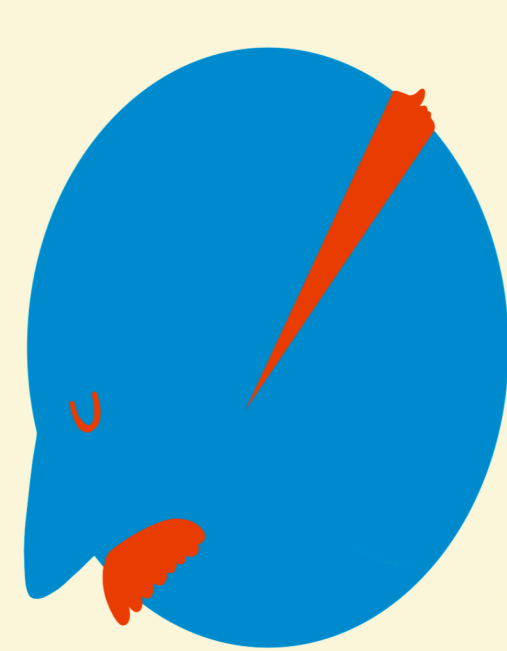
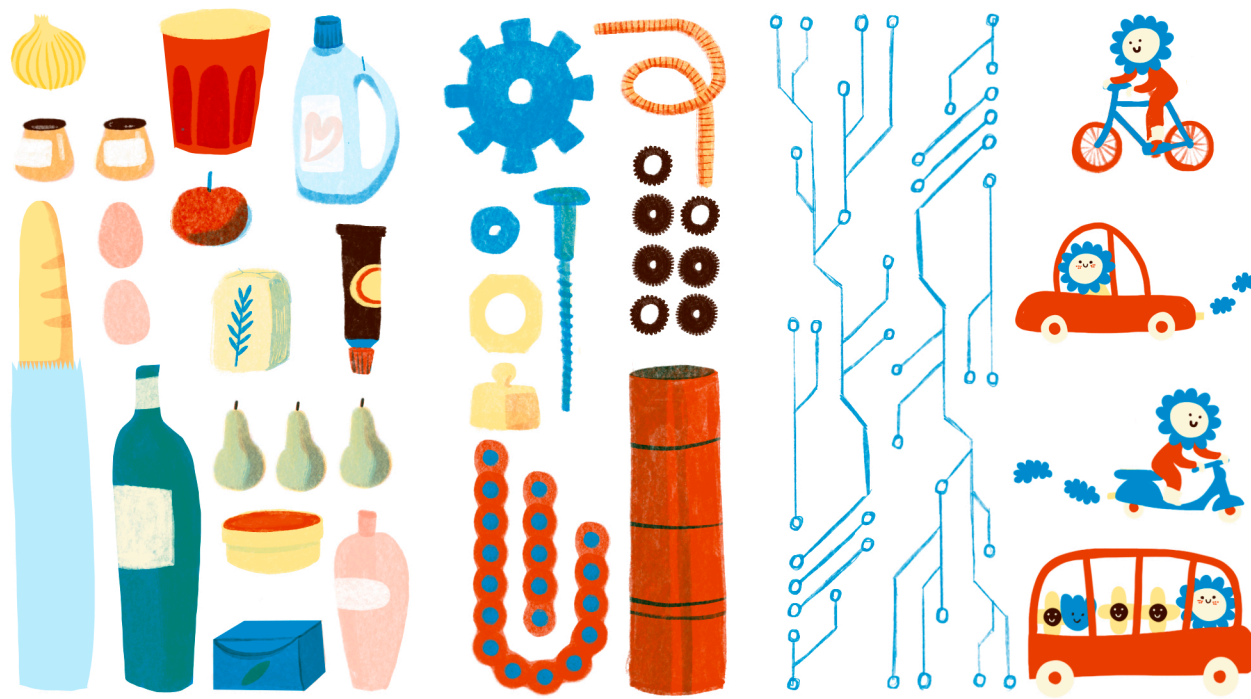


MORE THAN **70%** OF LUXEMBOURG COMPANIES ARE FAMILY BUSINESSES



MORE THAN HALF OF THE CEOs OF FAMILY BUSINESSES ARE MEN FROM THE FOUNDING FAMILY

**IN 2019** THESE FAMILY BUSINESSES WERE MOSTLY SPECIALISED IN CONSUMER PRODUCTS, INDUSTRY, CUTTING-EDGE TECHNOLOGIES, MOBILITY



**3%** OF THE DIRECTORS IN BUSINESSES ARE **WOMEN**

THE MEMBERS OF FOUNDING FAMILIES ARE MOSTLY MEN

## THE KEYS TO THE SUCCESS OF FAMILY BUSINESSES ARE

- INNOVATION** (Illustration of a lightbulb)
- INTERNATIONAL DEVELOPMENT** (Illustration of a globe)
- PRESERVATION OF THE COMPANY'S SPECIFICITY** (Illustration of a grid of dots)
- KEEPING FAMILY AND BUSINESS SEPARATE** (Illustration of a house and factory)
- GOOD GOVERNANCE** (Illustration of a scale)
- GOOD COMMUNICATION** (Illustration of speech bubbles)
- LONG TERM PLANNING** (Illustration of a person with a telescope)

BARRIERS TO SUCCESS ARE



**TALENT SHORTAGES**



**SUCCESSION DIFFICULTIES**

