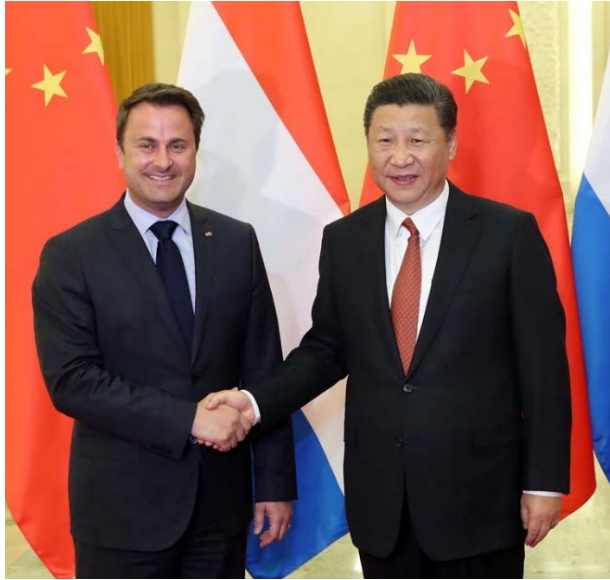


Henan Luxemburg Center Project



I. Project background



June, 2017

When met with Bettel, Prime Minister of Luxembourg, General Secretary Xi Jinping clearly stated that China supported the construction of the Zhengzhou-Luxembourg "Air Silk Road" to facilitate personnel exchanges.



September, 2017

Henan Province has issued a special scheme and work plan for promoting the construction of Zhengzhou-Luxembourg "Air Silk Road". The Plan pointed out that it is necessary to plan and build the "Henan Luxembourg Center" and build an important platform for China-EU open-up cooperation. The responsible units are Zhengdong New District Management Committee and HNCA.



June, 2018

The construction of Henan Luxembourg Center officially started. Xu Guang, deputy governor of Henan Province, and Marc Hubsch, Luxembourg's ambassador to China, attended the commencement ceremony and delivered a speech. This marked that China-Luxembourg friendly relation had further developed, and Zhengzhou-Luxembourg "Air Silk Road" construction had reached a new milestone.

II. Project location

(i) Zhengzhou location

Zhengzhou is the "Belt and Road" bridgehead. It has opened the Zhengzhou-Europe freight train and opened up the land corridor to Europe and Central Asia.

With Zhengzhou as the Asia-Pacific logistics hub and Luxembourg as the European logistics hub, we will accelerate the construction of the "Air Silk Road".



Zhengzhou - the capital of Henan Province, is an important integrated transportation hub in China. It is China's only city with a Mi-shaped high-speed rail pattern. The aviation 2h economic circle covers about 90% of China's population and economic aggregate, and the two-hour high-speed rail covers 700 million people.

II. Project location

(ii) Project site selection

Superior location
Unlimited potential



1 Midpoint of two centers

The project is located at the midpoint of two major core city connection trunks, namely, CBD of Zhengdong New District and Longhu Financial Island.

2 Junction between two rivers

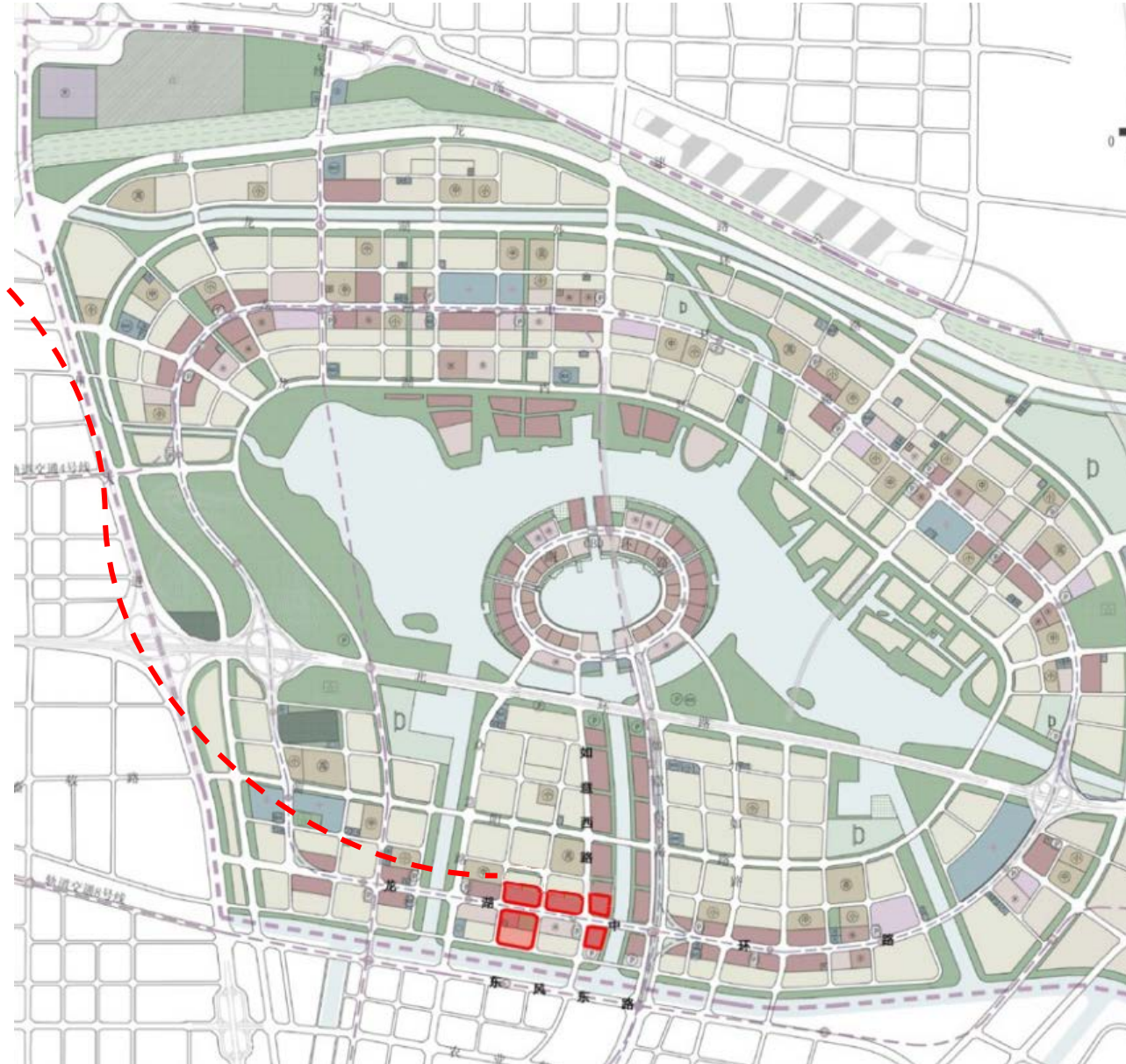
The project is at the confluence of Dongfeng Canal and the Canal connecting south and north, and enjoys a broad vision and the beauty of two waterways.

3 Metro accessibility

The project is adjacent to Zhengzhou Metro Line 4 and 8, which is convenient for travel.

4 Abundant commercial activities

In the project, the construction land is 128,000m², the building area is 388,000m², and the investment budget is about RMB 5.4 billion. The project covers high-end office buildings, international apartments, commercial facilities, and so on.



III. Project scheme

(i) Overall design



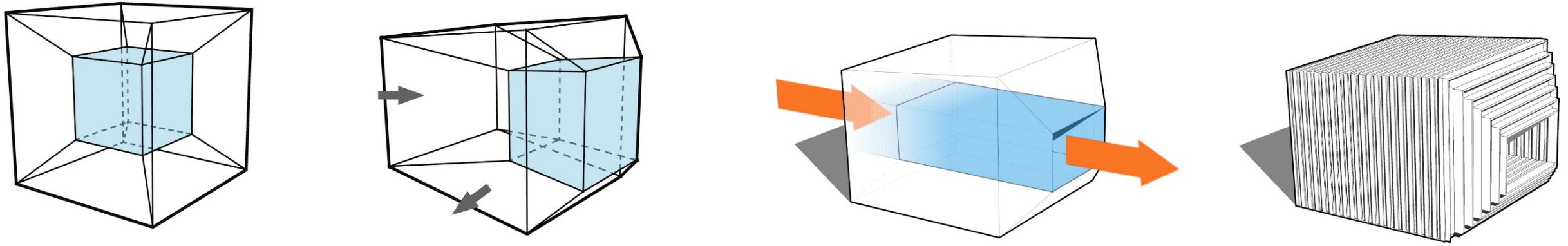
Project principal designer:
Kuang Xiaoming

Vice president of Shanghai Tongji
Urban Planning & Design Institute
and famous Chinese design master



III. Project scheme

(ii) Design concept



Despite years alternate, travel through the past. The "Ancient Traditional Silk Road" opened the way to trade exchanges between China and the West. The "Modern Air Silk Road" will continue to write a new space-time chapter. In this scheme, the conception of "Four-dimensional space" implies time travel and age progress. It emphasizes the integration of culture and trade between China and the West, to realize cultural leap and time-space span in the project. Build Zhengzhou-Luxembourg "Air Silk Road".

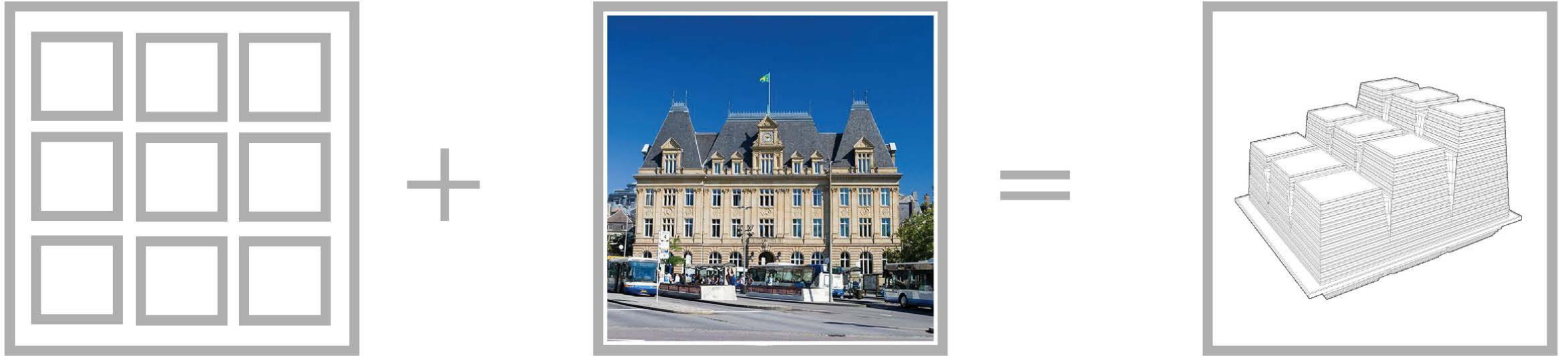
国际金融总部——时空之窗

International Business Finance Headquarters Center - Window of Space-time



III. Project scheme

(ii) Design concept



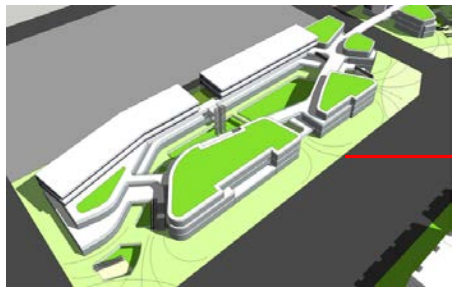
It combines the nine-grid pattern with the national characteristics of Luxembourg, known as the "Country of Thousand Forts", and takes full account of the conditions of land use, streamlines and refines the architectural image to form the architectural design model.

卢森堡签证中心——千堡之韵

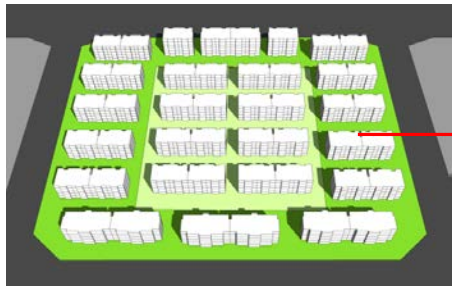
Foreign Affairs Service Center - Jiugong Qianbao



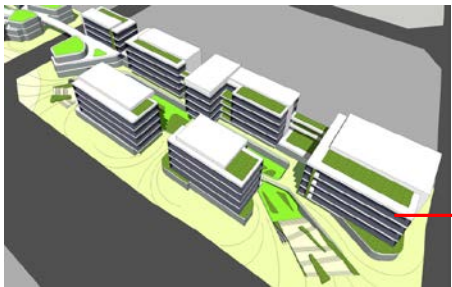
IV. Functional Orientation



(iv)D4-11 plot (Plot 04)
China-Europe Cross-border
Commercial Center
China-Luxembourg Cultural
Education Tourism Exchange Center
European Specialty Catering Center



(iii)D4-11 plot (Plot 03)
International Apartment



(v)D4-07-02, 03 (Plot 05)
International Business Finance
Headquarters Center



(i)RW-10 plot (Plot 01)
International Corporate Headquarters
Center



(ii)RW-11 plot (Plot 02)
Luxembourg Visa Application Center
International High-end Professional Service
Center
International Study Tour Service Center
Henan Foreign Affairs Service Center



V. Business Cooperation

| | |
|--------------------------------|--|
| (i) Financial Industry | Regional headquarters or branches of Banks, insurances, securities, funds and trusts; |
| (ii) Commerce Industry | Department stores, E-commerce, supermarkets, luxury goods, coffee, bars and European catering; |
| (iii) Service Industry | Accounting firms, law firms, business consulting institutions, translation agencies, training agencies, exhibition agencies, HR agencies, branches of international agencies and international conferences & forums; |
| (iv) Cultural Tourism Industry | Cultural institutions, art performance institutions, tourist organizations and overseas education agencies. |





Thanks !